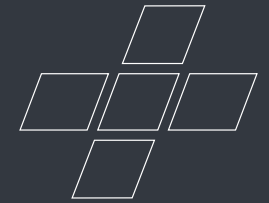




Ultimate workflow.

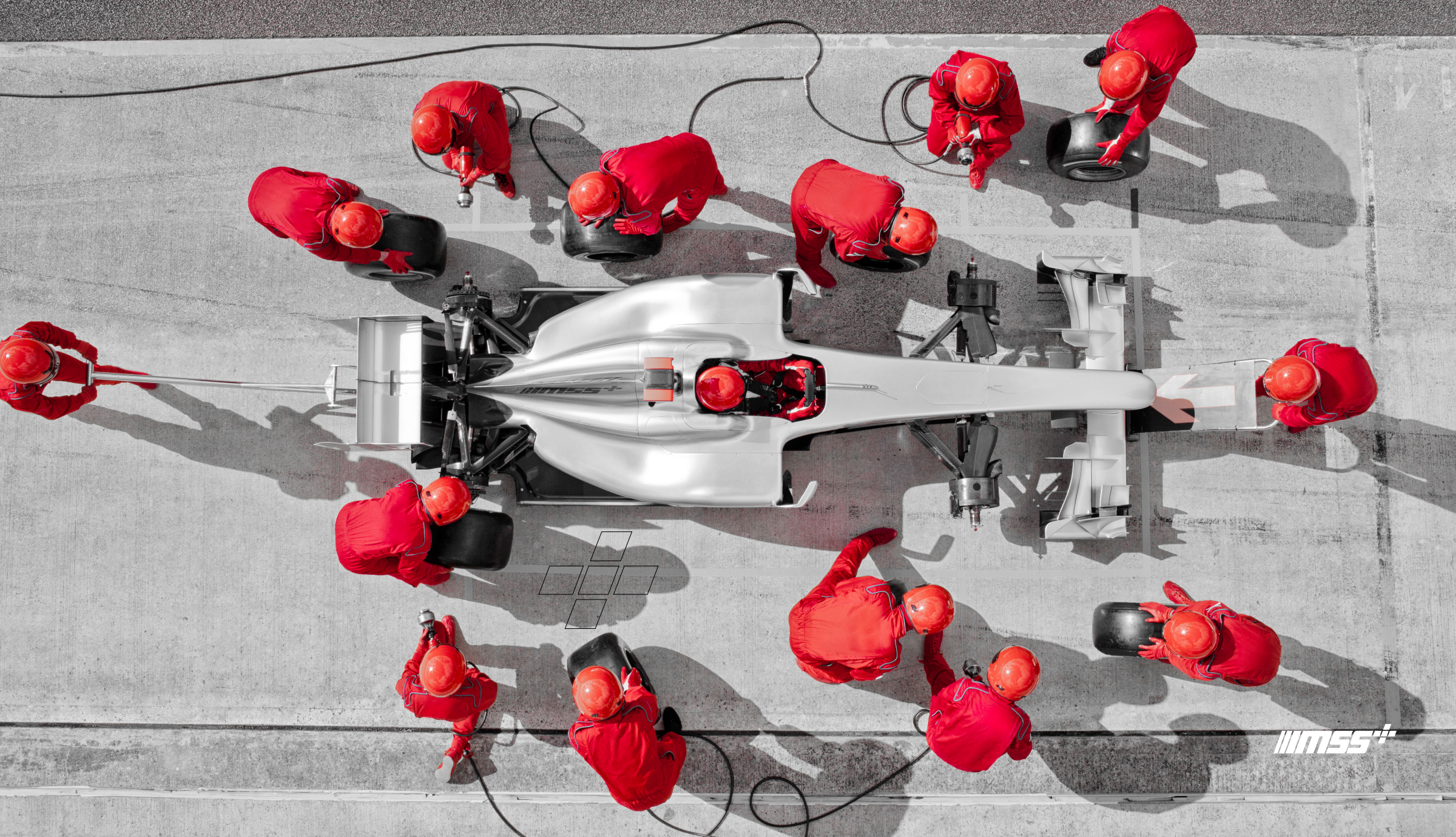


— A new era in
modular storage solutions
starts right here.

Index

Our story	5		
The markets	13		
MSS+ Configurator	15		
Product design process	17		
Production process	19		
Premium features	25		
▪ Self-supporting system	27		
▪ Drawers	29		
▪ Safety drawer blocking system	31		
▪ Slides	33		
▪ Unique powder coating	35		
▪ Dial safety locks	37		
▪ Handles and end caps	39		
▪ Power supply	41		
▪ Gas struts and hinges	43		
▪ Sonic Foam System	45		
MSS+ product range	49		
▪ Drawer cabinets	50		
▪ Portable cabinets	66		
		▪ Storage cabinets	78
		▪ Storage cabinet with sink	93
		▪ Waste bin/recycle cabinet	95
		▪ Lift and power cabinet	
		Challenger or Rotary	97
		▪ Reel cabinets	98
		▪ Wall cabinets	108
		▪ Back panels	120
		▪ Worktops	122
		▪ Posts	123
		▪ Range of bridge units	125
		Accessories	126
		▪ LED lighting	127
		▪ Dividers	128
		▪ Document holder	130
		▪ Laptop/tablet holder	131
		▪ Power bar/bracket	132
		Compositions	133

**ULTIMATE
WORKFLOW.**



|||MS5|||



Premium workplaces,
Ultimate workflow.



Our story

Our mission is to grow confidence in the technical services industry. We do this by developing and producing hand tools, storage systems, and specialty tools. These products enable professionals to achieve maximum productive output, as they work with high quality tools in premium workplaces. Sonic stands for efficiency, quality, and style.

Efficiency.

Nothing can be more frustrating than an unorganized, messy workplace. Whether it is in a car workshop, at a pit stop, or in the technical services area of a hospital or office, all professionals out there just want to do their job best. At Sonic we understand this like no other. We therefore put EFFICIENCY at the forefront of everything we do.

Quality.

You do not find broken tools or run down storage systems in efficient workplaces. We therefore believe that when we deliver efficiency, we automatically deliver QUALITY. And that is what you experience in every single product we offer. Long lasting, high quality equipment.

Style.

Sonic goes further where others stop. It is the final ingredient to really work with confidence. It is the red & black, the strong grip on the tools, the smoothness of our drawers and sliders. It is STYLE.



sonicmssplus.com



sonic-equipment.com

Our story

**Inspired by the efficiency
of pit stops, we have set
the ambition to create
ultimate workflow.**



Modular Storage Solutions plus

Back in 2015 we defined our ambition to reinvent the workplace. And not just reinvent. We promised ourselves to create the best modular storage solutions for professionals available on the market. Storage solutions that create premium workplaces. And these workplaces in their turn lead to ultimate workflow.

Quality in = Quality out.

Starting point of our MSS+ journey is our belief that quality in = quality out. Professionals can deliver only the maximum productive output that their workplace allows them to. With MSS+ we deliver the highest quality in modular storage solutions to maximise workflow.

MSS+: Born of change

Our story

Solid expertise

To create and supply the best modular storage solutions available in the market.

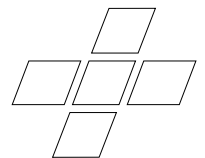
Solid expertise

Extensive research in various workplaces worldwide, together with UK engineers and designers.

Core belief

Quality in = Quality out.

Professionals can only perform at an ultimate level where there are no boundaries in using their workplace.



Reliability and durability

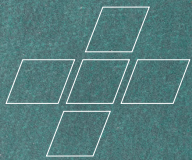
10-year warranty on every single part of the MSS+ product range.

A result we are proud of

The concept, creation and realization of MSS+ marks a new era in modular storage solutions, which makes us proud.

High availability

Custom configured premium workplaces no longer mean extensive waiting time. With our efficient warehousing we guarantee Just In Time delivery.



**EFFICIENCY
MADE PERFECT.**



Product mantra

Create ultimate
workflow.



The markets

The concept, creation and realisation of MSS+ marks a new era in the Sonic tradition of pioneering modular storage solutions. MSS+ is designed for professionals, with reliability and durability in mind. Every MSS+ product is backed by a 10 year warranty on all parts, slides, locks, gas struts, drawer casings, you name it. We put our name on it and we are proud of it.

Markets

- Automotive
- Agriculture
- Marine
- Motorcycles
- Bicycles
- Manufacturing
- Military
- Health care
- Aviation
- Other professional users

Mission

Create premium modular storage solutions to improve your efficiency, productivity, ergonomics and image of professionals worldwide.

Premium workplaces,
ultimate workflow

MSS+ Configurator

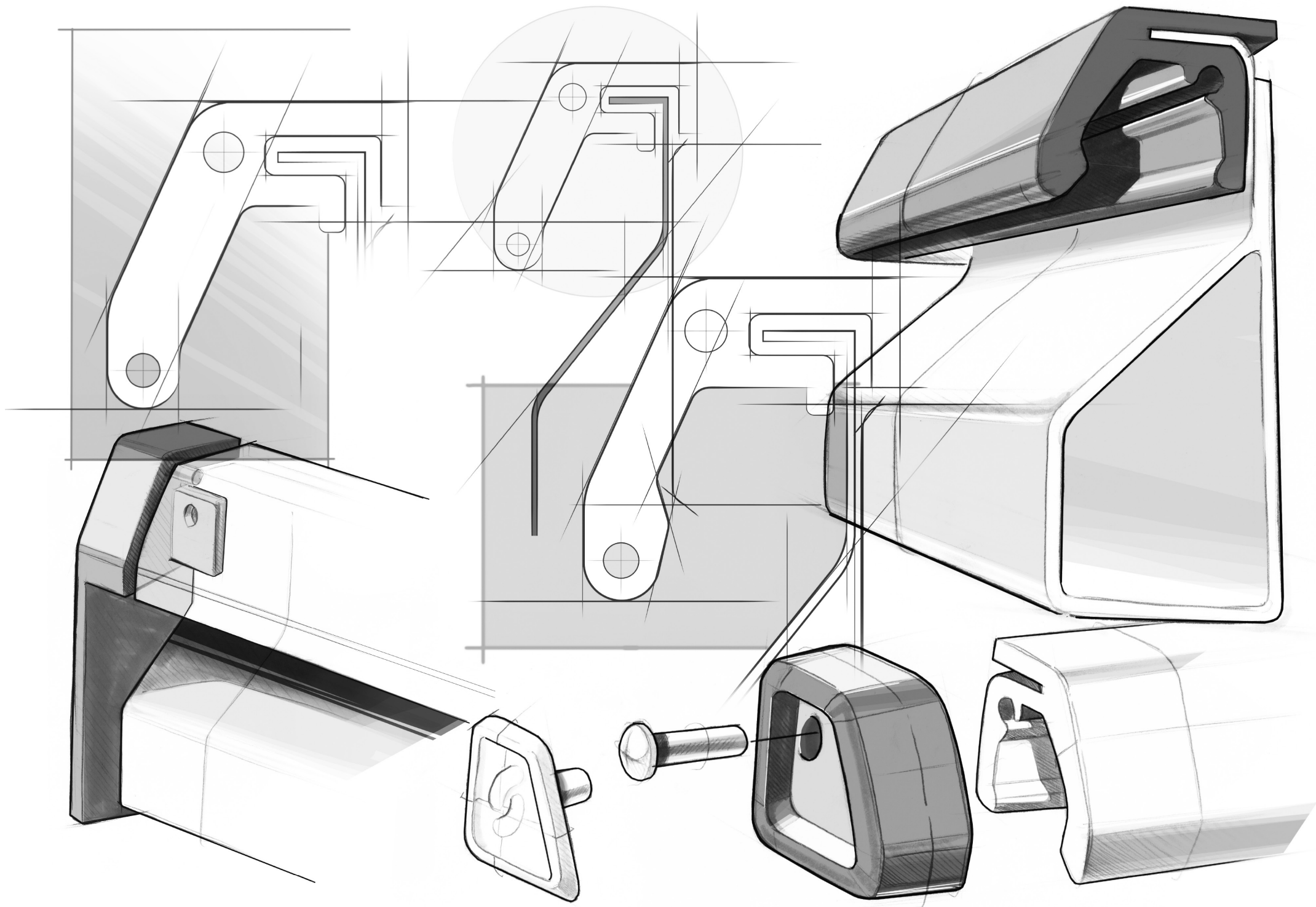
The unique MSS+ 3D configurator conveniently creates a premium tailor made workplace exactly to your needs. Say hello to ultimate workflow.



Want to design your own MSS+ composition? Contact us.

The sophisticated MSS+ product line allows you to design your own perfect composition. With the modular elements you can create the ideal workplace for your ultimate workflow. From planning to design and delivery, with the intuitive MSS+ configurator you are in control. Based on the most advanced CAD-technology you can create perfect MSS+ compositions tailored to your needs.

Ready for your premium workplace? Get in touch with our dedicated team that will help you create ultimate workflow.

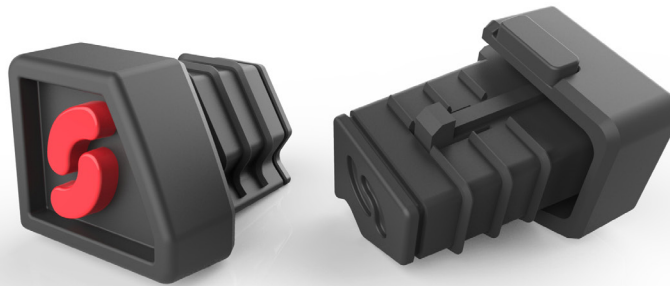


Product design process

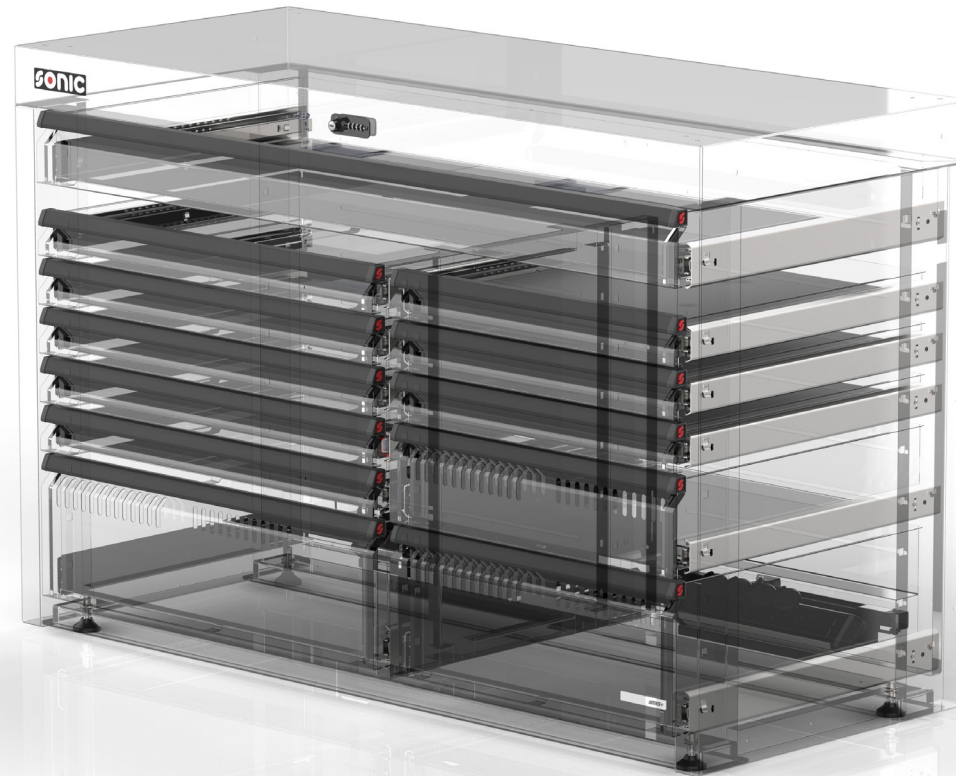
Our research and development experts teamed up with technical engineers and designers from the UK, to conduct an extensive study of various workplaces around the world. Having experienced so many differences and listened to various stories from professionals in technical services, we set the requirements for our new MSS+ product line; quality, style and efficiency in every single detail.

For example, in the product design process we have prototyped several handles and end caps to ensure the perfect grip and design.

No compromises, details matter



Redesigned workplaces



Production process

The latest technology is used to manufacture with operational precision as never seen before. MSS+ only selects the best raw materials in combination with an extensive quality control program. Sonic strives with MSS+ towards premium products with the highest exceptional quality available on the market.

We use the latest machinery from Germany, Italy and Finland. Laser-cutters, punch presses, press brakes and CNC panel benders with fully automatic digital managed electro-static powder coating systems.

This is how Sonic can assure you consistent premium quality in every MSS+ module.

Nothing else comes close

**HIGH
AVAILABILITY.**

MSS+

FRONT
SONIC EQUIPMENT
AMSTERDAM
C/O.
ITEM NO.: 4732718

FRONT
SONIC EQUIPMENT
AMSTERDAM
C/O.
ITEM NO.: 4732718

FRONT
SONIC EQUIPMENT
AMSTERDAM
C/O.
ITEM NO.: 4732718

ITEM NO.
QTY
N° 99,
4732718,
BUFT: 215

High availability

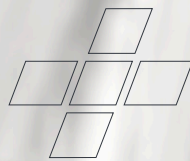
Sonic deliver by offering a large stock, fast delivery service and with over 30.000 orders each year, Sonic Equipment is a reliable partner and ready for the future!

Our 5000m² warehouse, with over 500.000 products on stock and a dedicated logistic warehouse team ensure that your products will be delivered with the best personal care.

MSS+

The greatest advantage of the MSS+ productline is that all modules are directly available in RAL 7016. Therefore your premium workplace with ultimate workflow can be realized as soon as you desire.

**DESIGNED
TO PERFORM.**



///MSS⁺

Premium features

Premium features

**All details matter.
Applying the latest
production
technologies on the
best materials allows
us to guarantee
premium quality
and design,
last to perform.**



Premium features



Self-supporting system



Drawers



Safety drawer blocking system



Slides



Unique powder coating



Dial locks



Handles and end caps



Power supply



Gas struts and hinges



Sonic Foam System



Self-supporting system

Create the ultimate workplace with the Modular Storage Solutions plus, made by Sonic. The self-supporting system is compatible to almost every working area where walls are no longer needed. Install the MSS+ wherever you like without any restrictions, due to following features:

- Solid construction
- Extra-large base
- Designed to outlast the life expectancy of the module
- Simple and easy to adjust for perfect levelling, MSS+ is equipped with heavy-duty levelling feet

Install MSS+ wherever you like.
Without any restrictions.



Drawers

The cabinet drawers are installed with either 123kg or 230kg capacity* slides per drawer.

Standard low, extra deep drawers - 123kg capacity per drawer

High, extra high drawers - 230kg capacity per drawer

- Eliminates deformation of the drawer
- Less strain on the drawer and cabinet, improved lifetime
- Wide variety of drawer sizes/heights
- All high and extra high drawers include ventilation slots
- Bottom drawers include power bar 2x USB and 4x 110V/230V (not for portable cabinets)
- Ergonomic handle in extruded/anodized black aluminium
- Drawers 100% retractable, which allows full visual overview of inventory minimizing loss of time and unnecessary purchases.
- Full height drawer sidewalls, which maximizes your investment by using every square inch available.
- Easy access also allows you to reach the tools/parts positioned at the back of the drawer

** Portable cabinets include regular Sonic slides:
40kg (standard low drawer)
80kg (standard high drawer)
capacity per drawer.*

Store more. In less space.



Safety drawer blocking system

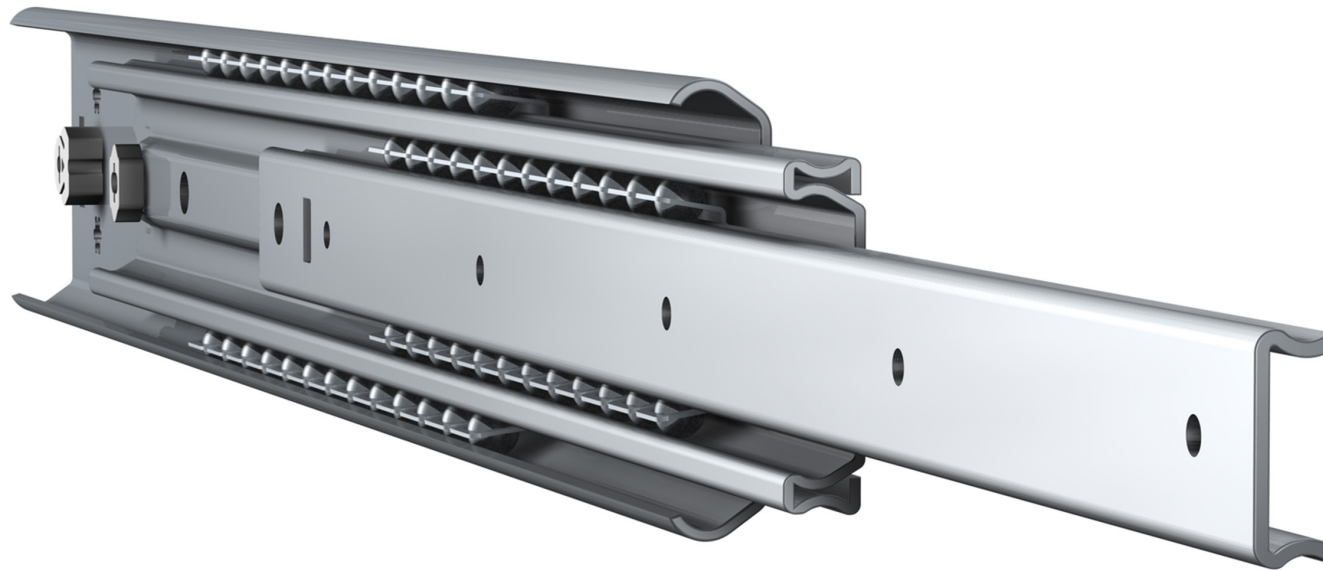
We use a German-made drawer blocking system, to prevent potential tipping over. Secure multiple drawers with just one lock. These systems offer interlock anti-tilt security for drawers-prevention of simultaneous opening.

Constructive counter-measures with anti-tilt-system

The industry has long been aware of the risk of tipping cabinets and for decades has installed anti-tilt systems as a standard feature to minimize the danger to office workers. Initially, simple anti-tilt devices were used to prevent multiple drawers being opened simultaneously, however these devices were not entirely fool-proof and it was possible to override them. With the introduction of MSS+, Sonic introduced safety drawer blocking system, effectively preventing simultaneous opening of drawers and perfecting anti-tilt security.

- Safety is the number 1 priority
- Only one drawer can be opened at a time instead of all drawers, which eliminates the risk of tipping over and injuries
- The weight of the closed drawers stabilizes the entire cabinet
- MSS+ is fitted with a central lock system to lock all drawers and completely prevent unwanted access
- A must-have for portable cabinets and toolboxes

Security in all cases



Slides

Dutch-made sliding systems, 123kg/230kg capacity*. The factory in The Netherlands, designed and produced tailor made slides especially for this MSS+ project. Their technical knowledge combined with the use of high quality materials and an extensive quality control program, allows us to develop high quality slides incorporating the highest standard for the industry: ISO/TS16949.

The MSS+ slide is very robust and rigid. This roll formed, extra heavy duty telescopic ball bearing slide exceeds a load capacity of 123kg/230kg with minimum deflection. This type of slides include heavy duty stops and have a unique ball cage design. The slides contain a pull in with fall safe.

- Highest quality heavy duty telescopic ball bearing slides available on the market
- Ensure maximum reliability, precision and smoothness for the lifespan of the MSS+ unit

Dutch-made slides
123kg/230kg capacity

** Portable cabinets include
regular Sonic slides:
40kg (standard low drawer)
80kg (standard high drawer)
capacity per drawer.*



Unique powder coating

Great looks, durable & amazing protection

Sonic assures consistent premium quality by using a full automatic digitally managed electro-static powder coating system. AkzoNobel provides the best paint for our MSS+ to ensure a consistent, high quality finishing.

- The best protection against scratches, abrasion and corrosion
- Ensures a top notch look for the lifetime of the unit
- AkzoNobel paint, made in The Netherlands

Protection and perfection.



Dial safety locks

The German-made MSS+ fix code lock is designed to provide convenient and safe security for personal storage or storage shared by small project teams. The code can be freely programmed and changed whenever required (for example, if security has been compromised or if a new team forms to handle a new project). Users do not have to carry a key around, so no security risk and cost involved to replace lost keys. To protect security, the integrated scramble ensures automatic reset of the dials during opening and closing.

In the event that a user forgets his personal code, the emergency key (held in a safe place by a responsible person, for example the facility manager) provides rapid, on-site solution: the emergency key can be used to provide emergency access and the possibility to reset the code.

Security made convenient

sonic

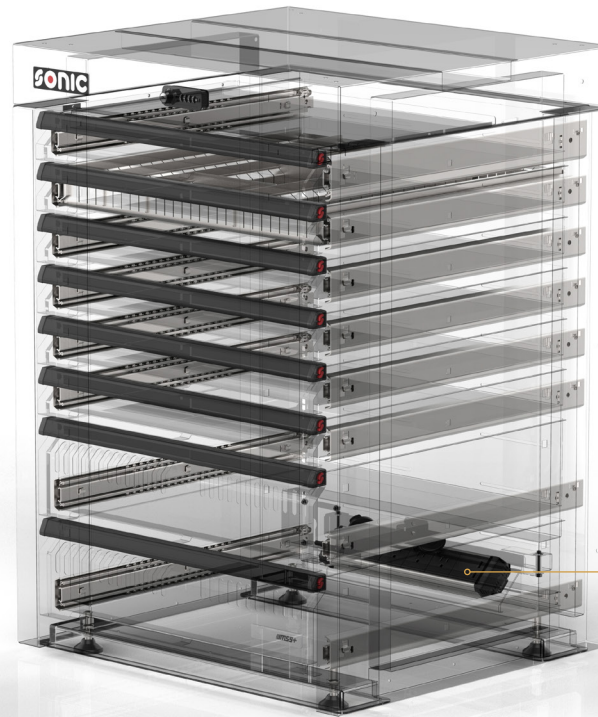


Handles and end caps

MSS+ designed a complete new ergonomic drawer handle system. Various computer drawing designs, 3D printing samples and testings were needed to create the ultimate MSS+ drawer handle. All drawer handles include on each side a rubber end cap, with the famous S-logo of the Sonic brand.

- Ergonomic design
- Adequate clearing space on drawer pullers
- Quality you can feel and see

Ergonomic and image



POWER BAR

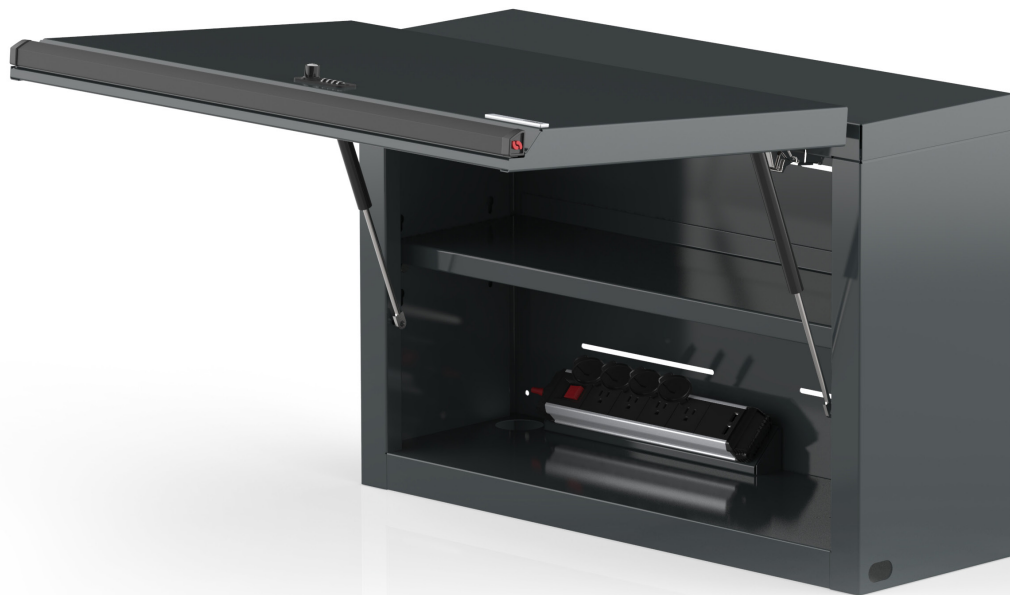
Power supply

The Sonic power bar is designed to give you power wherever you need it. This feature provides a convenient means to power your tools and charge any device with ease and efficiency.

- A must-have in the modern workplace
- Integrated in bottom drawer of drawer cabinets (except portable cabinets) and wall cabinets
- Safety covers



Power wherever you need it



Gas struts and hinges

Our MSS+ wall cabinets are outfitted with high quality gas struts and Austria-made Blum soft close hinges. These features were designed to improve the overall accessibility and convenience when using the overhead storage wall cabinets.

Improved accessibility

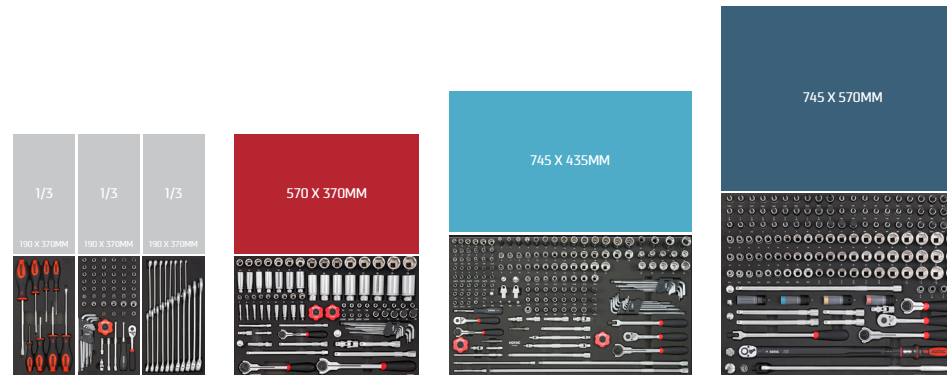


**WORKING
WILL BE
DIFFERENT**

Sonic Foam System

In the Sonic Foam System (SFS) the tools are stored in a well organized, chemical resistant, laser engraved foam inlay. With the SFS you can customize your drawers to fit your working needs and demands.

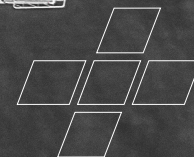
- Efficient organization of complete tool sets
- Two-tone foam color system for instant overview of missing tools
- Damage prevention during tools storage
- Tool sizes are mentioned on foam layer





**MODULAR
PERFECTION.**

///MSS+



Modular approach

Create ultimate workflow. Anywhere.

Every workplace is unique.

MSS+ offers a solid range of modules that creates ultimate workflow for every workplace. Anywhere.

Endless combinations.



Modular approach

Standardization brings efficiency. Still every workplace is unique. With our modular approach we reach the best of both worlds.



MSS+ product range



Drawer cabinets



Portable cabinets



Storage cabinets



Storage cabinet with sink



Waste bin/recycle cabinet



Lift and power cabinet



Reel cabinets



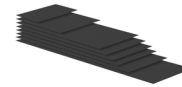
Wall cabinets



Wall cabinets with tambour door



Back panels



Worktops



Posts



Bridge units



Lighting



Divider kits



Document holder



Laptop/tablet holder



Power supply

Drawer cabinets



720mm, 8 drawers
Page 53



890mm, 8 drawers
Page 57



1540mm, 12 drawers
Page 61



720mm, 6 drawers
Page 55



890mm, 6 drawers
Page 59



720mm, 5 drawers
Page 63



890mm, 5 drawers
Page 65

MAXIMUM LOAD
CAPACITY: 1000KG

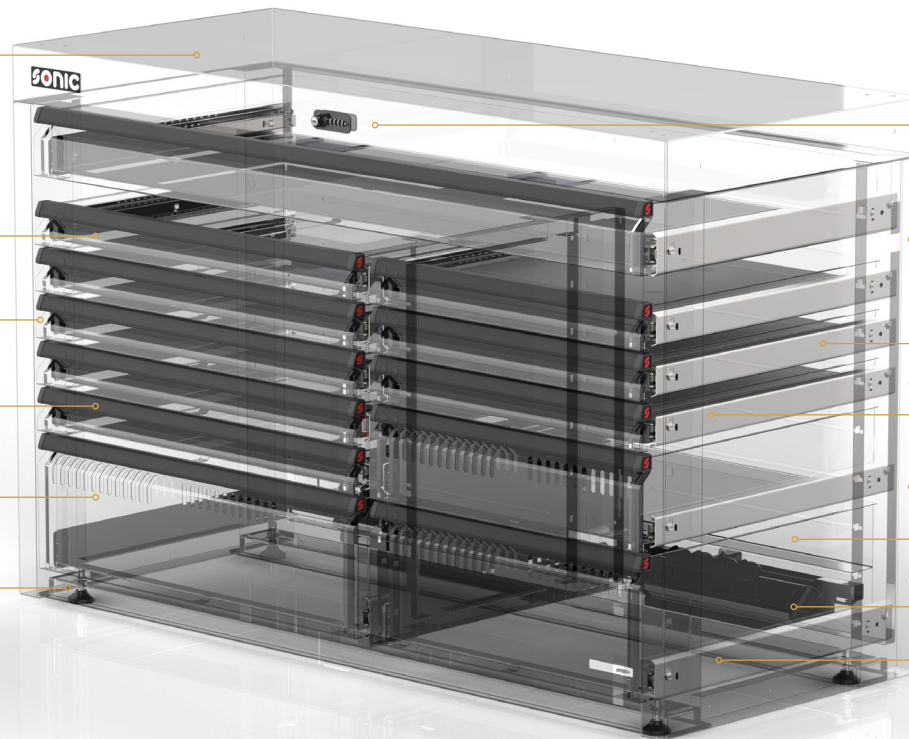
LOAD CAPACITY: 123KG

SLIDES INCLUDE HEAVY DUTY STOP, PULL
FUNCTION, PLUS FALL SAFETY SYSTEM

ERGONOMIC HANDLE IN EXTRUDED/
ANODIZED BLACK ALUMINIUM

ALL DEEP DRAWERS INCLUDE
VENTILATION SLOTS

ADJUSTABLE FEET



FRONT CENTRALIZED DIAL
SAFETY-LOCK, MADE IN GERMANY

HEAVY DUTY 1.4MM
STEEL CONSTRUCTION

BALL-BEARING SLIDES WITH UNIQUE BALL
CAGE DESIGN, MADE IN THE NETHERLANDS

DRAWERS 100% RETRACTABLE

HIGH QUALITY DURABLE
POWDER COATING FINISH

FULL HEIGHT DRAWER SIDEWALL

BOTTOM HIGH DRAWER INCLUDE STANDARD
POWER BAR, 2X USB AND 4X 220V

MAXIMUM LOAD CAPACITY: 230KG



720mm drawer cabinet, 8 drawers



Art. no. 5072001 (EU power bar)

Art. no. 5072001U (USA power bar)

Cabinet dimensions: 720mm wide, 650mm deep, 1005mm high.

6x standard low drawers. Load capacity 123kg

Outer dims W 612mm x D 633mm x H 77mm; inner dims W 577mm x D 578mm x H 67mm

1x standard high drawer. Load capacity 230kg

Outer dims W 612mm x D 633mm x H 160mm; inner dims W 577mm x D 578mm x H 145mm

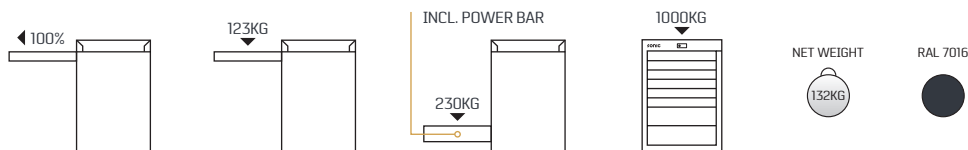
1x standard high drawer including power bar. Load capacity 230kg

Outer dims W 612mm x D 633mm x H 160mm; inner dims W 577mm x D 523mm x H 145mm

- Adjustable feet
- High quality durable powder coating finish
- Drawers 100% retractable
- Full height drawer sidewall
- Ball-bearing slides with unique ball cage design, made in The Netherlands
- Slides contain heavy duty stop, pull function and fall safety system
- Ergonomic handle in extruded/anodized black aluminium
- Front centralized dial safety-lock, made in Germany
- Standard color RAL 7016
- Heavy duty 1.4mm steel construction
- All high drawers include ventilation slots
- Bottom high drawer include standard power bar, 2x USB and 4x 220V
- Top drawer is equipped with integral writing desk system
- 10 year warranty

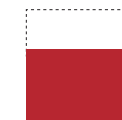
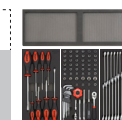
Optional:

- Foam liners for drawers
- Drawer divider kits with optional slots and spacers
- Hard-wearing composite worktop 2mm
- Stainless steel worktop 20mm
- Drawers variety of multiple depths and configurations
- Full range of colors upon request, longer lead time and additional fees could apply



SFS
SONIC TOOL SYSTEM

BUILD YOUR OWN UNIQUE MSS+





720mm drawer cabinet, 6 drawers



Art. no. 5072002 (EU power bar)

Art. no. 5072002U (USA power bar)

Cabinet dimensions: 720mm wide, 650mm deep, 1005mm high.

3x standard low drawers. Load capacity 123kg

Outer dims W 612mm x D 633mm x H 77mm: inner dims W 577mm x D 578mm x H 67mm

2x standard high drawer. Load capacity 230kg

Outer dims W 612mm x D 633mm x H 160mm: inner dims W 577mm x D 578mm x H 145mm

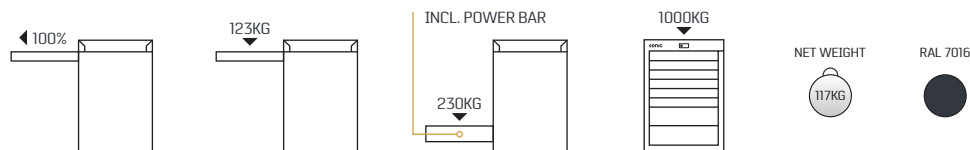
1x standard high drawer including power bar. Load capacity 230kg

Outer dims W 612mm x D 633mm x H 243mm: inner dims W 577mm x D 523mm x H 228mm

- Adjustable feet
- High quality durable powder coating finish
- Drawers 100% retractable
- Full height drawer sidewall
- Ball-bearing slides with unique ball cage design, made in The Netherlands
- Slides contain heavy duty stop, pull function and fall safety system
- Ergonomic handle in extruded/anodized black aluminium
- Front centralized dial safety-lock, made in Germany
- Standard color RAL 7016
- Heavy duty 1.4mm steel construction
- All high drawers include ventilation slots
- Bottom extra high drawer include standard power bar, 2x USB and 4x 220V
- 10 year warranty

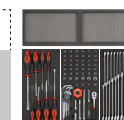
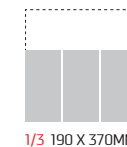
Optional:

- Foam liners for drawers
- Drawer divider kits with optional slots and spacers
- Hard-wearing composite worktop 2mm
- Stainless steel worktop 20mm
- Drawers variety of multiple depths and configurations
- Full range of colors upon request, longer lead time and additional fees could apply



SFS
SONIC FAST SYSTEM

BUILD YOUR OWN UNIQUE MSS+





890mm drawer cabinet, 8 drawers



Art. no. 5089001 (EU power bar)

Art. no. 5089001U (USA power bar)

Cabinet dimensions: 890mm wide, 650mm deep, 1005mm high.

6x wide low drawers. Load capacity 123kg

Outer dims W 782mm x D 633mm x H 77mm: inner dims W 747mm x D 578mm x H 67mm

1x wide high drawer. Load capacity 230kg

Outer dims W 612mm x D 633mm x H 160mm: inner dims W 747mm x D 578mm x H 145mm

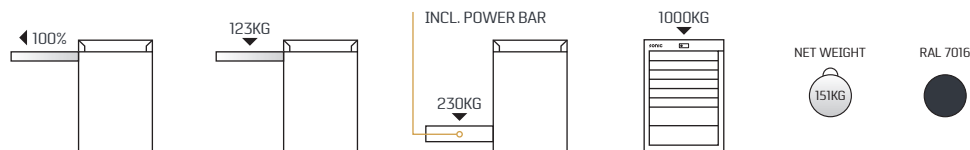
1x wide high drawer including power bar. Load capacity 230kg

Outer dims W 612mm x D 633mm x H 160mm: inner dims W 747mm x D 523mm x H 145mm

- Adjustable feet
- High quality durable powder coating finish
- Drawers 100% retractable
- Full height drawer sidewall
- Ball-bearing slides with unique ball cage design, made in The Netherlands
- Slides contain heavy duty stop, pull function and fall safety system
- Ergonomic handle in extruded/anodized black aluminium
- Front centralized dial safety-lock, made in Germany
- Standard color RAL 7016
- Heavy duty 1.4mm steel construction
- All high drawers include ventilation slots
- Bottom high drawer include standard power bar, 2x USB and 4x 220V
- 10 year warranty

Optional:

- Foam liners for drawers
- Drawer divider kits with optional slots and spacers
- Hard-wearing composite worktop 2mm
- Stainless steel worktop 20mm
- Drawers variety of multiple depths and configurations
- Full range of colors upon request, longer lead time and additional fees could apply



SFS
SONIC FOAM SYSTEM

BUILD YOUR OWN UNIQUE MSS+



1X 745 X 435MM



1X 745 X 570MM



890mm drawer cabinet, 6 drawers



Art. no. 5089002 (EU power bar)

Art. no. 5089002U (USA power bar)

Cabinet dimensions: 890mm wide, 650mm deep, 1000mm high.

3x wide low drawers. Load capacity 123kg

Outer dims W 782mm x D 633mm x H 77mm: inner dims W 747mm x D 578mm x H 67mm

2x wide high drawers. Load capacity 230kg

Outer dims W 782mm x D 633mm x H 160mm: inner dims W 577mm x D 578mm x H 145mm

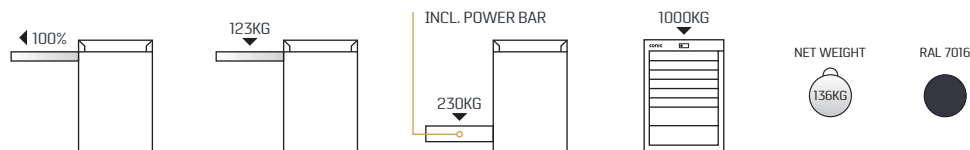
1x wide extra high drawer including power bar. Load capacity 230kg

Outer dims W 782mm x D 633mm x H 243mm: inner dims W 747mm x D 523mm x H 228mm

- Adjustable feet
- High quality durable powder coating finish
- Drawers 100% retractable
- Full height drawer sidewall
- Ball-bearing slides with unique ball cage design, made in The Netherlands
- Slides contain heavy duty stop, pull function and fall safety system
- Ergonomic handle in extruded/anodized black aluminium
- Front centralized dial safety-lock, made in Germany
- Standard color RAL 7016
- Heavy duty 1.4mm steel construction
- All high drawers include ventilation slots
- Bottom extra high drawer include standard power bar, 2x USB and 4x 220V
- 10 year warranty

Optional:

- Foam liners for drawers
- Drawer divider kits with optional slots and spacers
- Hard-wearing composite worktop 2mm
- Stainless steel worktop 20mm
- Drawers variety of multiple depths and configurations
- Full range of colors upon request, longer lead time and additional fees could apply



BUILD YOUR OWN UNIQUE MSS+



1X 745 X 435MM



1X 745 X 570MM



1540mm drawer cabinet, 12 drawers



Art. no. 5153901 (EU power bar)

Art. no. 5153901U (USA power bar)

Cabinet dimensions: 1540mm wide, 650mm deep, 1005mm high.

3x standard low drawers. Load capacity 123kg

Outer dims W 612mm x D 633mm x H 77mm; inner dims W 577mm x D 578mm x H 67mm

1x standard high drawers. Load capacity 230kg

Outer dims W 612mm x D 633mm x H 160mm; inner dims W 577mm x D 578mm x H 145mm

1x standard extra high drawer including power bar. Load capacity 230kg

Outer dims W 612mm x D 633mm x H 243mm; inner dims W 577mm x D 523mm x H 228mm

5x wide low drawers. Load capacity 123kg

Outer dims W 782mm x D 633mm x H 77mm; inner dims W 747mm x D 578mm x H 67mm

1x wide extra high drawer including power bar. Load capacity 230kg

Outer dims W 782mm x D 633mm x H 243mm; inner dims W 747mm x D 523mm x H 228mm

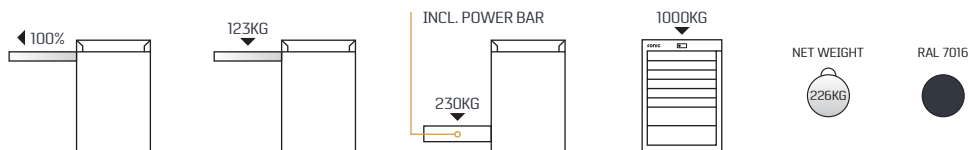
1x wide extra high drawer including power bar. Load capacity 230kg

Outer dims W 1432mm x D 633mm x H 124mm; inner dims W 1397mm x D 578mm x H 109mm

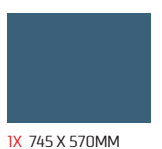
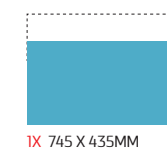
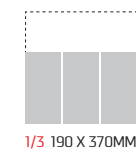
- Adjustable feet
- High quality durable powder coating finish
- Drawers 100% retractable
- Full height drawer sidewall
- Ball-bearing slides with unique ball cage design, made in The Netherlands
- Slides contain heavy duty stop, pull function and fall safety system
- Ergonomic handle in extruded/anodized black aluminium
- Front centralized dial safety-lock, made in Germany
- Standard color RAL 7016
- Heavy duty 1.4mm steel construction
- All high drawers include ventilation slots
- Bottom extra high drawers include standard power bar, 2x USB and 4x 220V
- 10 year warranty

Optional:

- The optionals are the same as 890mm drawer cabinet, 6 drawers. Page 47



BUILD YOUR OWN UNIQUE MSS+





720mm topbox, 5 drawers



Art. no. 5072003

Cabinet dimensions: 720mm wide, 650mm deep, 570mm high.

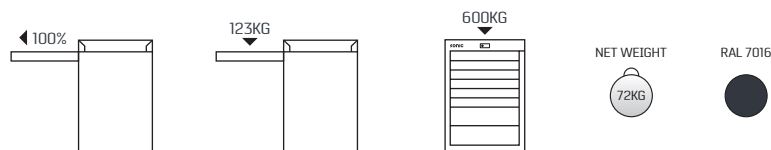
5x standard low drawers. Load capacity 123kg

Outer dims W 612mm x D 633mm x H 77mm: inner dims W 577mm x D 578mm x H 67mm

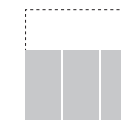
- High quality durable powder coating finish
- Drawers 100% retractable
- Full height drawer sidewall
- Ball-bearing slides with unique ball cage design, made in The Netherlands
- Slides contain heavy duty stop, pull function and fall safety system
- Ergonomic handle in extruded/anodized black aluminium
- Front centralized dial safety-lock, made in Germany
- Standard color RAL 7016
- Heavy duty 1.4mm steel construction
- 10 year warranty

Optional:

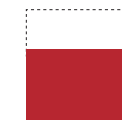
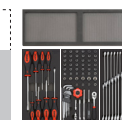
- Foam liners for drawers
- Drawer divider kits with optional slots and spacers
- Hard-wearing composite worktop 2mm
- Stainless steel worktop 20mm
- Drawers variety of multiple depths and configurations
- Full range of colors upon request, longer lead time and additional fees could apply



BUILD YOUR OWN UNIQUE MSS+



1/3 190 X 370MM



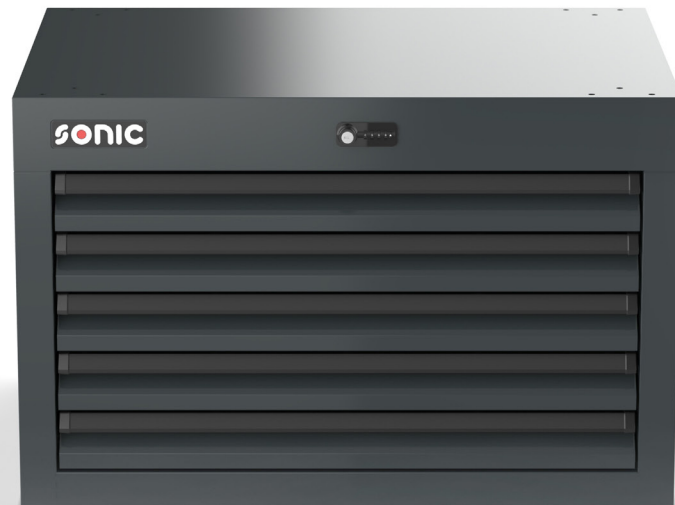
1X 570 X 570MM



1X 570 X 570MM



890mm topbox, 5 drawers



Art. no. 5089003

Cabinet dimensions: 890mm wide, 650mm deep, 570mm high.

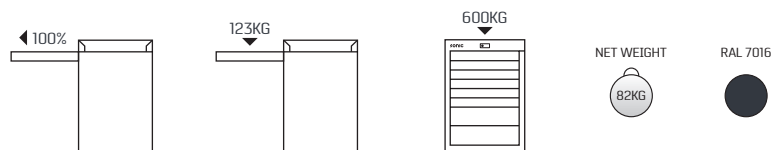
5x standard low drawers. Load capacity 123kg

Outer dims W 782mm x D 633mm x H 77mm: inner dims W 747mm x D 578mm x H 67mm

- High quality durable powder coating finish
- Drawers 100% retractable
- Full height drawer sidewall
- Ball-bearing slides with unique ball cage design, made in The Netherlands
- Slides contain heavy duty stop, pull function and fall safety system
- Ergonomic handle in extruded/anodized black aluminium
- Front centralized dial safety-lock, made in Germany
- Standard color RAL 7016
- Heavy duty 1.4mm steel construction
- 10 year warranty

Optional:

- Foam liners for drawers
- Drawer divider kits with optional slots and spacers
- Hard-wearing composite worktop 2mm
- Stainless steel worktop 20mm
- Drawers variety of multiple depths and configurations
- Full range of colors upon request, longer lead time and additional fees could apply



BUILD YOUR OWN UNIQUE MSS+



IX 745 X 435MM



IX 745 X 570MM

Portable cabinets



700mm, 7 drawers extra deep
Page 69



870mm, 7 drawers extra deep
Page 73



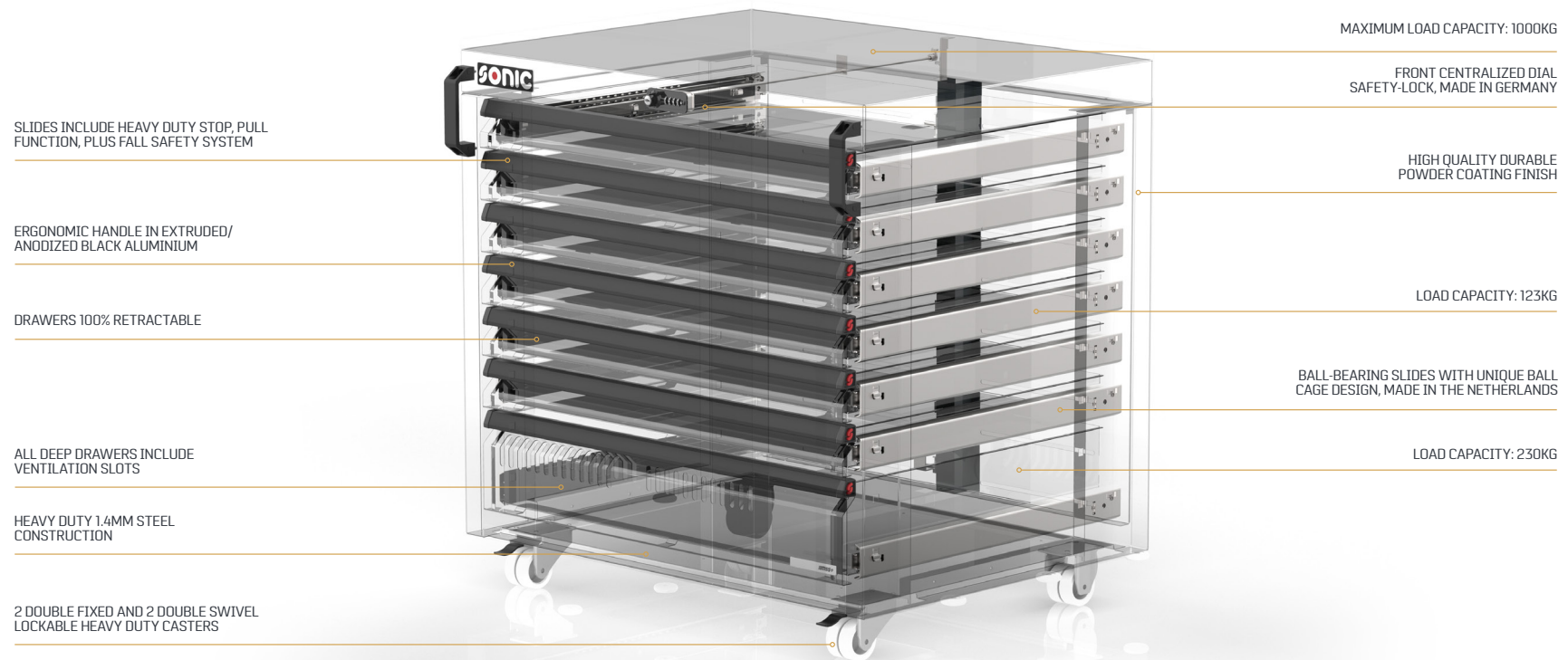
Service cart
Page 77



700mm, 7 drawers
Page 71



870mm, 7 drawers
Page 75





700mm portable cabinet extra deep, 7 drawers



Art. no. 5072004

Cabinet dimensions: 700mm wide, 660mm deep, 884mm high.

6x standard low drawers. Load capacity 40kg

Outer dims W 612mm x D 633mm x H 77mm: inner dims W 577mm x D 578mm x H 67mm

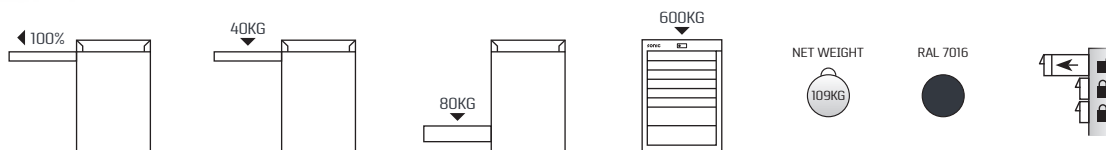
1x standard high drawer. Load capacity 80kg

Outer dims W 612mm x D 633mm x H 160mm: inner dims W 577mm x D 578mm x H 145mm

- Bridge pull handles
- Guide protection rollers
- 2 double fixed and 2 double swivel lockable heavy duty casters
- Hard-wearing composite worktop 2mm
- High quality durable powder coating finish
- Drawers 100% retractable
- Full height drawer sidewall
- Ball-bearing slides with unique ball cage design, made in The Netherlands
- Slides contain heavy duty stop, pull function and fall safety system
- Ergonomic handle in extruded/anodized black aluminium
- Front centralized dial safety-lock, made in Germany
- Standard color RAL 7016
- Heavy duty 1.4mm steel construction
- All high drawers include ventilation slots
- 10 year warranty

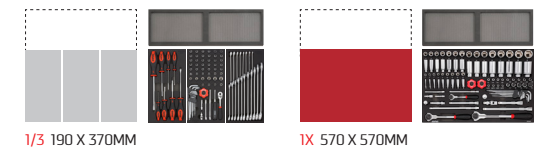
Optional:

- Foam liners for drawers
- Drawer divider kits with optional slots and spacers
- Stainless steel worktop 20mm
- Drawers variety of multiple depths and configurations
- Full range of colors upon request, longer lead time and additional fees could apply



SFS
SONIC TOOL SYSTEM

BUILD YOUR OWN UNIQUE MSS+





700mm portable cabinet, 7 drawers



Art. no. 5072005

Cabinet dimensions: 700mm wide, 530mm deep, 884mm high.

6x standard low drawers. Load capacity 40kg

Outer dims W 605mm x D 435mm x H 77mm; inner dims W 577mm x D 438mm x H 67mm

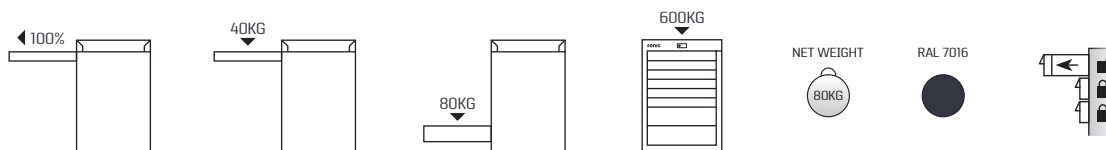
1x standard high drawer. Load capacity 80kg

Outer dims W 605mm x D 435mm x H 160mm; inner dims W 577mm x D 438mm x H 145mm

- Bridge pull handles
- Guide protection rollers
- 2 double fixed and 2 double swivel lockable heavy duty casters
- Hard-wearing composite worktop 2mm
- High quality durable powder coating finish
- Drawers 100% retractable
- Full height drawer sidewall
- Ball-bearing slides with unique ball cage design, made in The Netherlands
- Slides contain heavy duty stop, pull function and fall safety system
- Ergonomic handle in extruded/anodized black aluminium
- Front centralized dial safety-lock, made in Germany
- Standard color RAL 7016
- Heavy duty 1.4mm steel construction
- All high drawers include ventilation slots
- 10 year warranty

Optional:

- Foam drawer liners or pre-formed inlays for drawers as a standard option
- Drawer divider kits with optional slots and spacers
- Stainless steel worktop 20mm
- Drawers variety of multiple depths and configurations
- Full range of colors upon request, longer lead time and additional fees could apply



BUILD YOUR OWN UNIQUE MSS+



1/3 190 X 370MM



1X 570 X 370MM



870mm portable cabinet extra deep, 7 drawers



Art. no. 5089004

Cabinet dimensions: 870mm wide, 660mm deep, 884mm high.

6x standard low drawers. Load capacity 40kg

Outer dims W 782mm x D 635mm x H 77mm: inner dims W 747mm x D 578mm x H 67mm

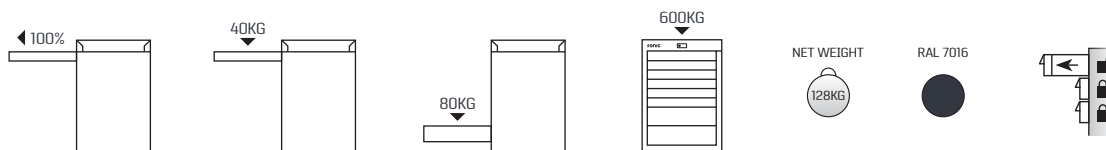
1x standard high drawer. Load capacity 80kg

Outer dims W 782mm x D 635mm x H 160mm: inner dims W 747mm x D 578mm x H 145mm

- Bridge pull handles
- Guide protection rollers
- 2 double fixed and 2 double swivel lockable heavy duty casters
- Hard-wearing composite worktop 2mm
- High quality durable powder coating finish
- Drawers 100% retractable
- Full height drawer sidewall
- Ball-bearing slides with unique ball cage design, made in The Netherlands
- Slides contain heavy duty stop, pull function and fall safety system
- Ergonomic handle in extruded/anodized black aluminium
- Front centralized dial safety-lock, made in Germany
- Standard color RAL 7016
- Heavy duty 1.4mm steel construction
- All high drawers include ventilation slots
- 10 year warranty

Optional:

- Foam liners for drawers
- Drawer divider kits with optional slots and spacers
- Stainless steel worktop 20mm
- Drawers variety of multiple depths and configurations
- Full range of colors upon request, longer lead time and additional fees could apply



SFS
SONIC FAST SYSTEM

BUILD YOUR OWN UNIQUE MSS+



1X 745 X 435MM



1X 745 X 570MM





870mm portable cabinet, 7 drawers



Art. no. 5089005

Cabinet dimensions: 870mm wide, 530mm deep, 884mm high.

6x standard low drawers. Load capacity 40kg

Outer dims W 775mm x D 495mm x H 77mm; inner dims W 750mm x D 438mm x H 67mm

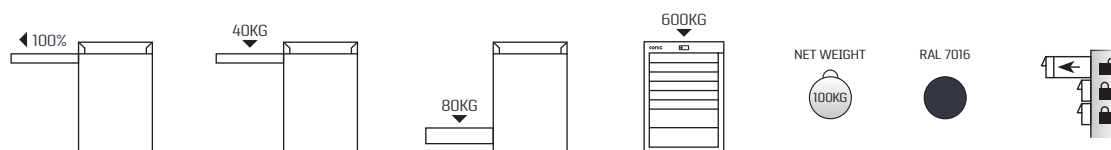
1x standard high drawer. Load capacity 80kg

Outer dims W 775mm x D 495mm x H 160mm; inner dims W 750mm x D 438mm x H 145mm

- Bridge pull handles
- Guide protection rollers
- 2 double fixed and 2 double swivel lockable heavy duty casters
- Hard-wearing composite worktop 2mm
- High quality durable powder coating finish
- Drawers 100% retractable
- Full height drawer sidewall
- Ball-bearing slides with unique ball cage design, made in The Netherlands
- Slides contain heavy duty stop, pull function and fall safety system
- Ergonomic handle in extruded/anodized black aluminium
- Front centralized dial safety-lock, made in Germany
- Standard color RAL 7016
- Heavy duty 1.4mm steel construction
- All high drawers include ventilation slots
- 10 year warranty

Optional:

- Foam liners for drawers
- Drawer divider kits with optional slots and spacers
- Stainless steel worktop 20mm
- Drawers variety of multiple depths and configurations
- Full range of colors upon request, longer lead time and additional fees could apply



BUILD YOUR OWN UNIQUE MSS+



1X 745 X 435MM



890mm service cart



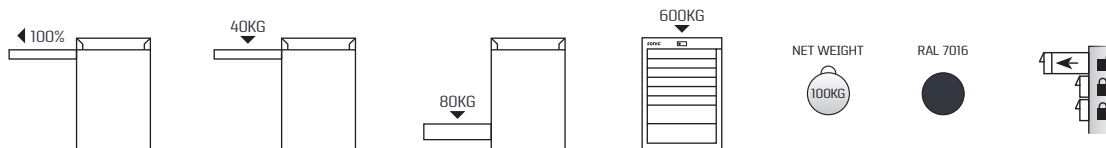
Art. no. 5089011

Prototype; under construction

- Fits under the bridge units in a setup
- Removable front panels
- Bridge pull handles on front and back side
- Foldable side handle
- Protection bumpers at the corners
- 4 swivel lockable heavy duty casters
- High quality durable powder coating finish
- Ergonomic handle in extruded/anodized black aluminium
- Standard color RAL 7016
- Heavy duty 1.4mm steel construction
- 10 year warranty

Optional:

- Full range of colors upon request, longer lead time and additional fees could apply



Storage cabinets



360mm, left-handed door
Page 81



720mm, left-handed door
Page 83



890mm, double door
Page 85



650mm, left-handed door
Page 89



965mm, double door
Page 91



360mm, right-handed door
Page 81



720mm, right-handed door
Page 83



1060mm, corner double-door
Page 87



650mm, right-handed door
Page 89





360mm storage cabinet, left or right-handed door



Art. no. 5036001

360mm storage cabinet, left-handed door

Cabinet dimensions: 360mm wide, 650mm deep, 1005mm high.

Art. no. 5036002

360mm storage cabinet, right-handed door

Cabinet dimensions: 360mm wide, 650mm deep, 1005mm high.

- Adjustable feet
- Soft close door system
- Heavy duty hinges, made in Austria
- High quality durable powder coating finish
- 2 adjustable shelves
- Ergonomic handle in extruded/anodized black aluminium
- Front centralized dial safety-lock, made in Germany
- Standard color RAL 7016
- Heavy duty 1.4mm steel construction
- Ventilation slots at the back side
- 10 year warranty

Optional:

- Hard-wearing composite worktop 2mm
- Stainless steel worktop 20mm
- Full range of colors upon request, longer lead time and additional fees could apply



NET WEIGHT



RAL 7016





720mm storage cabinet, left or right-handed door



Art. no. 5072009

720mm storage cabinet, left-handed door

Cabinet dimensions: 720mm wide, 650mm deep, 1005mm high.

Art. no. 5072010

720mm storage cabinet, right-handed door

Cabinet dimensions: 720mm wide, 650mm deep, 1005mm high.

- Adjustable feet
- Soft close door system
- Heavy duty hinges, made in Austria
- High quality durable powder coating finish
- 2 adjustable shelves
- Ergonomic handle in extruded/anodized black aluminium
- Front centralized dial safety-lock, made in Germany
- Standard color RAL 7016
- Heavy duty 1.4mm steel construction
- Ventilation slots at the back side
- 10 year warranty

Optional:

- Hard-wearing composite worktop 2mm
- Stainless steel worktop 20mm
- Full range of colors upon request, longer lead time and additional fees could apply



NET WEIGHT



RAL 7016





890mm storage cabinet, double door



Art. no. 5089009

Cabinet dimensions: 890mm wide, 650mm deep, 1005mm high.

- Adjustable feet
- Soft close door system
- Heavy duty hinges, made in Austria
- High quality durable powder coating finish
- 2 adjustable shelves
- Ergonomic handle in extruded/anodized black aluminium
- Front centralized dial safety-lock, made in Germany
- Standard color RAL 7016
- Heavy duty 1.4mm steel construction
- Ventilation slots at the back side
- 10 year warranty

Optional:

- Hard-wearing composite worktop 2mm
- Stainless steel worktop 20mm
- Full range of colors upon request, longer lead time and additional fees could apply



NET WEIGHT



RAL 7016





1060mm corner storage cabinet, double door



Art. no. 5106002

Cabinet dimensions: 1060mm wide, 650mm deep, 1005mm high.

- Adjustable feet
- Soft close door system
- Heavy duty hinges, made in Austria
- High quality durable powder coating finish
- 2 adjustable shelves
- Ergonomic handle in extruded/anodized black aluminium
- Front centralized dial safety-lock, made in Germany
- Standard color RAL 7016
- Heavy duty 1.4mm steel construction
- Ventilation slots at the back side
- 10 year warranty

Optional:

- Stainless steel worktop 20mm
- Full range of colors upon request, longer lead time and additional fees could apply



NET WEIGHT



RAL 7016





650mm tall storage cabinet, left or right-handed door



Art. no. 5065501

650mm tall cabinet, left-handed door

Cabinet dimensions: 650mm wide, 650mm deep, 2105mm high.

Art.no.5065502

650mm tall cabinet, right-handed door

Cabinet dimensions: 650mm wide, 650mm deep, 2105mm high.

- Adjustable feet
- Soft close door system
- Heavy duty hinges, made in Austria
- High quality durable powder coating finish
- 1 fixed shelf
- 4 adjustable shelves
- Ergonomic handle in extruded/anodized black aluminium
- Front centralized dial safety-lock, made in Germany
- Standard color RAL 7016
- Heavy duty 1.4mm steel construction
- Ventilation slots at the back side
- 2x integrated document/laptop/tablet holder
- 10 year warranty

Optional:

- Full range of colors upon request, longer lead time and additional fees could apply

NET WEIGHT



RAL 7016





965mm tall storage cabinet, double door



Art. no. 5096501

965mm tall cabinet, double door

Cabinet dimensions: 966mm wide, 650mm deep, 2105mm high.

- Adjustable feet
- Soft close door system
- Heavy duty hinges, made in Austria
- High quality durable powder coating finish
- 1 fixed shelf
- 4 adjustable shelves
- Ergonomic handle in extruded/anodized black aluminium
- Front centralized dial safety-lock, made in Germany
- Standard color RAL 7016
- Heavy duty 1.4mm steel construction
- Ventilation slots at the back side
- 2x integrated document/laptop/tablet holder
- 10 year warranty

Optional:

- Full range of colors upon request, longer lead time and additional fees could apply

NET WEIGHT



RAL 7016





720mm cabinet with sink, double door



Art. no. 5072011

Cabinet dimensions: 720mm wide, 650mm deep, 1005mm high.

- Adjustable feet
- Integrated stainless steel bowl inner diameter 584mm x 434mm
- Soft close door system
- Heavy duty hinges, made in Austria
- High quality durable powder coating finish
- Ergonomic handle in extruded/anodized black aluminium
- Front centralized dial safety-lock, made in Germany
- Standard color RAL 7016
- Heavy duty 1.4mm steel construction
- Ventilation slots at the back side
- 10 year warranty

Optional:

- Hard-wearing composite worktop 2mm
- Stainless steel worktop 20mm
- Full range of colors upon request, longer lead time and additional fees could apply

* Tap is not included

* Always with stainless steel worktop (no other options)



NET WEIGHT



RAL 7016





720mm waste bin/recycle cabinet



Art. no. 5072012

Cabinet dimensions: 720mm wide, 650mm deep, 1005mm high.

Integrated stainless steel waste bins dimensions:

565mm wide, 284mm deep, 465mm high

- Easy opening
- Waste bin drawer contains heavy duty slides. Load capacity 230kg
- 100% retracatable drawers or fully-extending drawers for easy empty
- Adjustable feet
- High quality durable powder coating finish
- Ergonomic handle in extruded/anodized black aluminium
- Standard color RAL 7016
- Heavy duty 1.4mm steel construction
- Ventilation slots at the back side
- 10 year warranty

Optional:

- Hard-wearing composite worktop 2mm
- Stainless steel worktop 20mm
- Full range of colors upon request, longer lead time and additional fees could apply





720mm lift and power cabinet Challenger or Rotary



Art. no. 5072013 (EU power bar)

Art. no. 5072013U (USA power bar)

720mm lift and power cabinet Challenger

Cabinet dimensions: 720mm wide, 650mm deep, 1005mm high.

Art. no. 5072014 (EU power bar)

Art. no. 5072014U (USA power bar)

720mm lift and power cabinet Rotary

Cabinet dimensions: 720mm wide, 650mm deep, 1005mm high.

- 1 door
- 1 panel with bracket and buttons for Challenger/Rotary lift control
- Adjustable feet
- High quality durable powder coating finish
- Ergonomic handle in extruded/anodized black aluminium
- Standard color RAL 7016
- Include standard power bar*, 2x USB and 4x 220V
- Heavy duty 1.4mm steel construction
- Ventilation slots at the back side
- 10 year warranty

Optional:

- Hard-wearing composite worktop 2mm
- Stainless steel worktop 20mm
- Full range of colors upon request, longer lead time and additional fees could apply

Remark:

Only available on request



CHALLENGER

NET WEIGHT



RAL 7016



ROTARY

Reel cabinets



360mm
Page 101



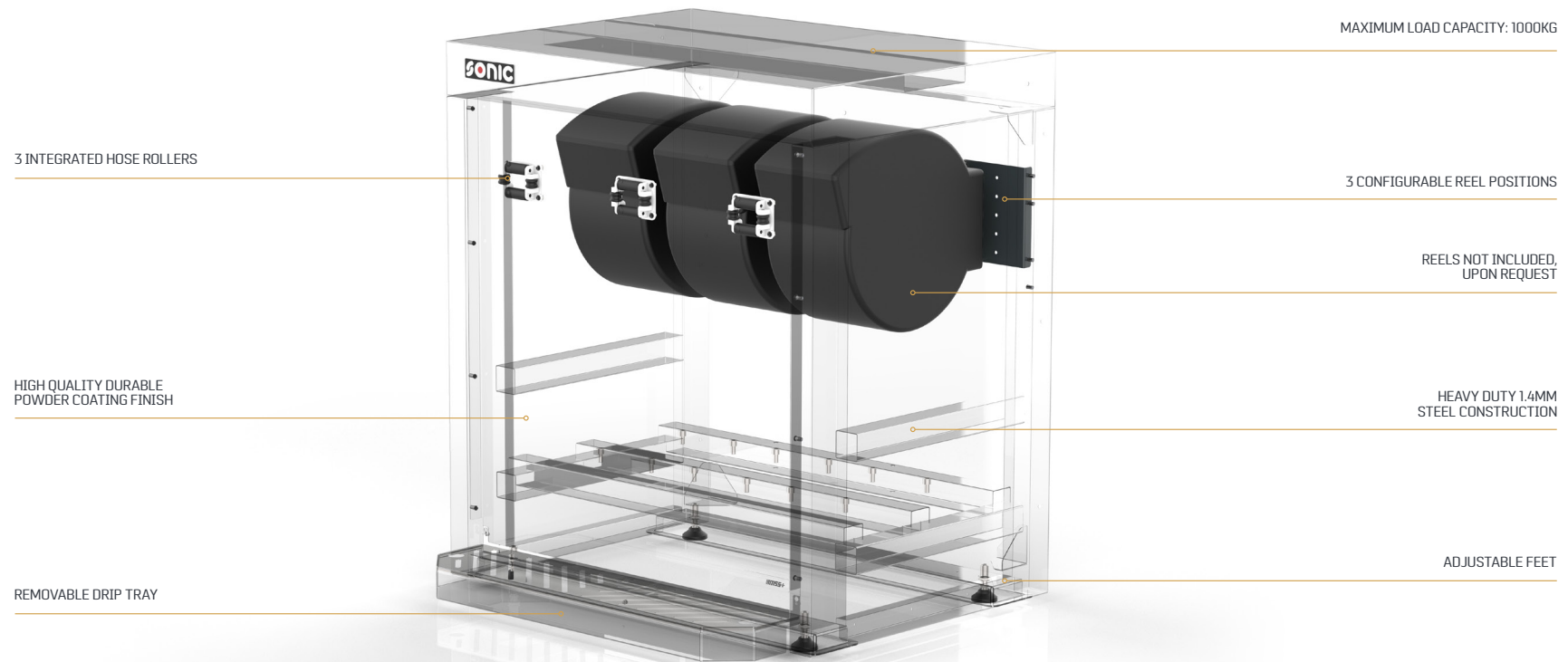
720mm
Page 103



890mm
Page 105



650mm
Page 107





360mm reel cabinet



Art. no. 5036003 (EU power bar plugs mounted at the front panel)
 Art. no. 5036003U (USA power bar plugs mounted at the front panel)

Cabinet dimensions: 360mm wide, 650mm deep, 1005mm high.

- 2 integral rollers
- 2 power bar plugs mounted at the front panel
- 2 configurable reel positions
- Adjustable feet
- High quality durable powder coating finish
- Standard color RAL 7016
- Heavy duty 1.4mm steel construction
- 10 year warranty

Optional:

- Hard-wearing composite worktop 2mm
- Stainless steel worktop 20mm
- Full range of colors upon request, longer lead time and additional fees could apply

Remark:

Reels not included, upon request



NET WEIGHT



RAL 7016





720mm reel cabinet



Art. no. 5072007

Cabinet dimensions: 720mm wide, 650mm deep, 1005mm high.

- 2 integral hose rollers
- Removable drip tray
- 2 configurable reel positions
- Ideally suited to fluid (oils/water/etc.)
- Adjustable feet
- High quality durable powder coating finish
- Standard color RAL 7016
- Heavy duty 1.4mm steel construction
- 10 year warranty

Optional:

Hard-wearing composite worktop 2mm

Stainless steel worktop 20mm

Full range of colors upon request, longer lead time and additional fees could apply

Remark:

Reels not included, upon request



NET WEIGHT



RAL 7016





890mm reel cabinet



Art. no. 5089007

Cabinet dimensions: 890mm wide, 650mm deep, 1005mm high.

- 3 integral hose rollers
- Removable drip tray
- 3 configurable reel positions
- Ideally suited to fluid (oils/water/etc.)
- Adjustable feet
- High quality durable powder coating finish
- Standard color RAL 7016
- Heavy duty 1.4mm steel construction
- 10 year warranty

Optional:

Hard-wearing composite worktop 2mm

Stainless steel worktop 20mm

Full range of colors upon request, longer lead time and additional fees could apply

Remark:

Reels not included, upon request



NET WEIGHT



RAL 7016





650mm reel tall cabinet



Art. no. 5071801

Cabinet dimensions: 650mm wide, 650mm deep, 2105mm high.

- 2 integral hose rollers
- Removable drip tray
- 2 configurable reel positions for air/electra
- 2 configurable reel positions for fluids (oil/water/etc.)
- Single door at the top
- Adjustable feet
- High quality durable powder coating finish
- Standard color RAL 7016
- Heavy duty 1.4mm steel construction
- 10 year warranty

Optional:

Full range of colors upon request, longer lead time and additional fees could apply

Remark:

Reels not included, upon request

NET WEIGHT

140KG

RAL 7016



Wall cabinets



720mm
Page 111



820mm
Page 113



890mm
Page 115



720mm
Page 117

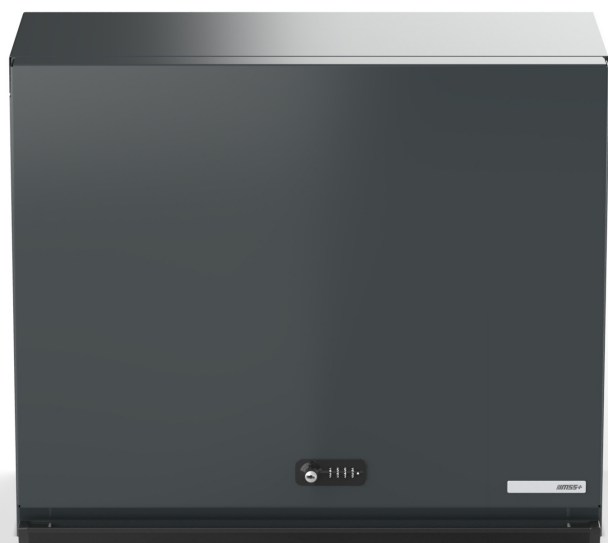


890mm
Page 119





720mm wall cabinet



Art. no. 5071802 (EU power bar)

Art. no. 5071802U (USA power bar)

Dimensions: 720mm wide, 343mm deep, 600mm high.

- Heavy duty gas struts with soft close function
- High quality durable powder coating finish
- 1 adjustable shelf
- Maximum load capacity 150kg
- Cable grommet 65mm
- Integrated paper feed dispenser
- Ergonomic handle in extruded/anodized black aluminium
- Front centralized dial safety-lock, made in Germany
- Standard color RAL 7016
- Heavy duty 1.4mm steel construction
- Ventilation slots at the back side
- Standard with power bar, 2x USB and 4x 220V
- 10 year warranty

Optional:

Full range of colors upon request, longer lead time and additional fees could apply

NET WEIGHT

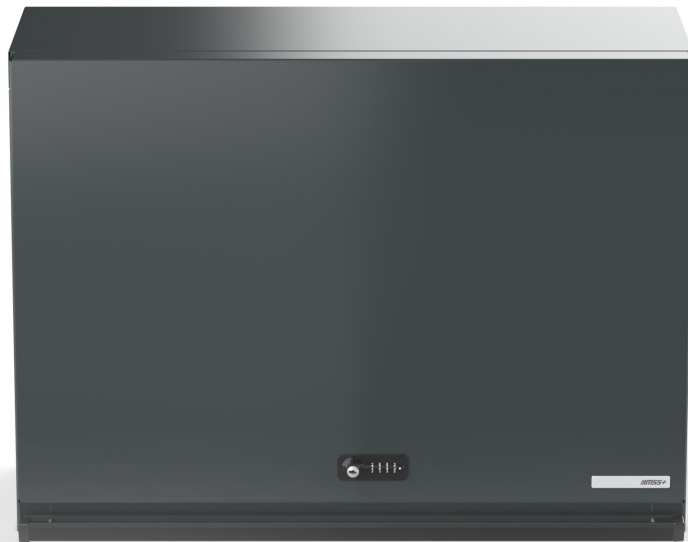


RAL 7016





820mm wall cabinet



Art. no. 5082001 (EU power bar)

Art. no. 5082001U (USA power bar)

Dimensions: 820mm wide, 343mm deep, 600mm high.

- Heavy duty gas struts with soft close function
- High quality durable powder coating finish
- 1 adjustable shelf
- Maximum load capacity 150kg
- Cable grommet 65mm
- Integrated paper feed dispenser
- Ergonomic handle in extruded/anodized black aluminium
- Front centralized dial safety-lock, made in Germany
- Standard color RAL 7016
- Heavy duty 1.4mm steel construction
- Ventilation slots at the back side
- Standard with power bar, 2x USB and 4x 220V
- 10 year warranty

Optional:

Full range of colors upon request, longer lead time and additional fees could apply

NET WEIGHT

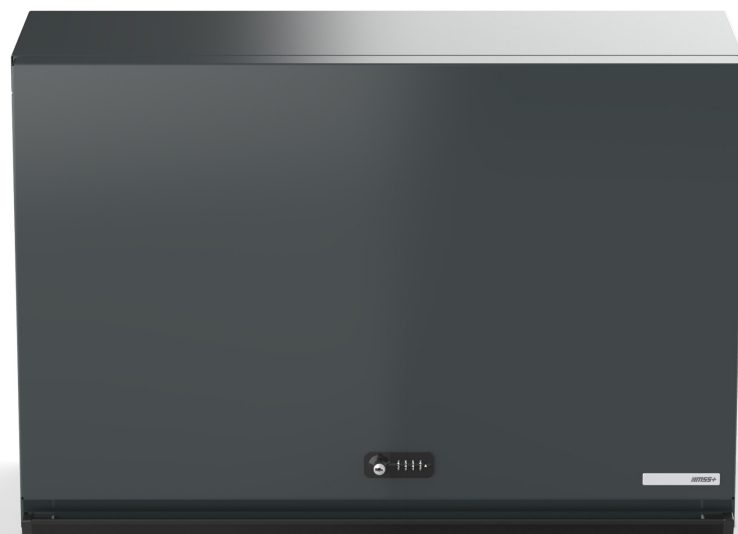


RAL 7016





890mm wall cabinet



Art. no. 5089010 (EU power bar)

Art. no. 5089010U (USA power bar)

Dimensions: 890mm wide, 343mm deep, 600mm high.

- Heavy duty gas struts with soft close function
- High quality durable powder coating finish
- 1 adjustable shelf
- Maximum load capacity 150kg
- Cable grommet 65mm
- Integrated paper feed dispenser
- Ergonomic handle in extruded/anodized black aluminium
- Front centralized dial safety-lock, made in Germany
- Standard color RAL 7016
- Heavy duty 1.4mm steel construction
- Ventilation slots at the back side
- Standard with power bar, 2x USB and 4x 220V
- 10 year warranty

Optional:

Full range of colors upon request, longer lead time and additional fees could apply

NET WEIGHT



RAL 7016





720mm wall cabinet with tambour door



Art. no. 5072008 (EU power bar)

Art. no. 5072008U (USA power bar)

Cabinet dimensions: 720mm wide, 345mm deep, 980mm high.

Tambour door locker dimensions: 675mm wide, 280mm deep, 897mm high.

- Manual tambour door system
- Possibility of keeping the shutter open and leaving the panel with the tools visible
- Maximum load capacity 200kg
- Keyhole perforated rear panel
- Suitable for Sonic hooks/clips
- High quality durable powder coating finish
- Front centralized dial safety-lock, made in Germany
- Standard color RAL 7016
- Heavy duty 1.4mm steel construction
- Standard with power bar, 2x USB and 4x 220V
- 10 year warranty

Optional:

- Full range of colors and other perforated rear panels (square or round holes) available upon request, longer lead time and additional fees could apply.

NET WEIGHT



RAL 7016





890mm wall cabinet with tambour door



Art. no. 5089008 (EU power bar)

Art. no. 5089008U (USA power bar)

Cabinet dimensions: 890mm wide, 345mm deep, 980mm high.

Tambour door locker dimensions: 845mm wide, 280mm deep, 897mm high.

- Manual tambour door system
- Possibility of keeping the shutter open and leaving the panel with the tools visible
- Maximum load capacity 200kg
- Keyhole perforated rear panel
- Suitable for Sonic hooks/clips
- High quality durable powder coating finish
- Front centralized dial-safety lock
- Standard color RAL 7016
- Heavy duty 1.4mm steel construction
- Standard with power bar, 2x USB and 4x 220V
- 10 year warranty

Optional:

- Full range of colors and other perforated rear panels (square or round holes) available upon request, longer lead time and additional fees could apply.

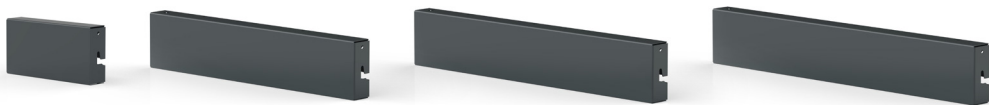
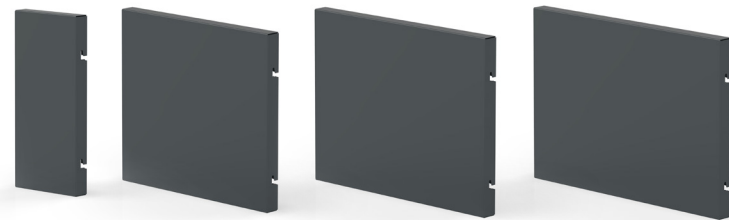
NET WEIGHT



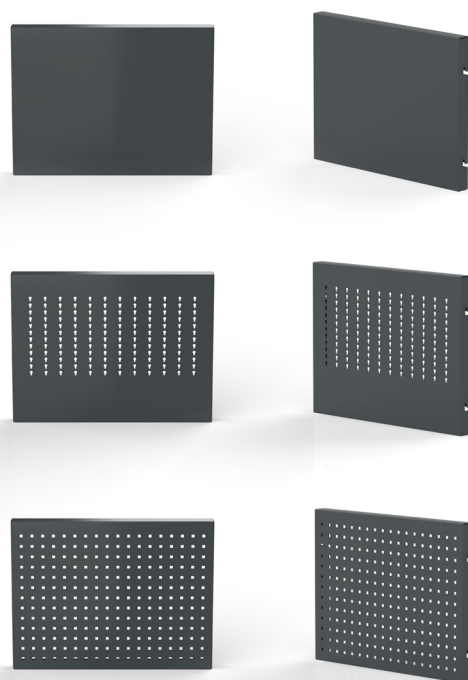
RAL 7016



Back panels



Available dimensions of back panels



RAL 7016



- Art. no. 5999901 MSS+ blank back panel, 259x50x120mm
- Art. no. 5999902 MSS+ blank back panel, 619x50x120mm
- Art. no. 5999903 MSS+ blank back panel, 719x50x120mm
- Art. no. 5999904 MSS+ blank back panel, 789x50x120mm
- Art. no. 5999930 MSS+ blank back panel, 959x50x120mm corner

- Art. no. 5999913 MSS+ blank back panel, 259x50x552mm
- Art. no. 5999905 MSS+ blank back panel, 619x50x552mm
- Art. no. 5999906 MSS+ blank back panel, 719x50x552mm
- Art. no. 5999907 MSS+ blank back panel, 789x50x552mm
- Art. no. 5999931 MSS+ blank back panel, 959x50x552mm corner

- Art. no. 5999908 MSS+ blank back panel, 259x50x1104mm
- Art. no. 5999909 MSS+ blank back panel, 619x50x1104mm
- Art. no. 5999910 MSS+ blank back panel, 719x50x1104mm
- Art. no. 5999911 MSS+ blank back panel, 789x50x1104mm
- Art. no. 5999934 MSS+ blank back panel, 959x50x1104mm corner

- * Art. no. 5999912 MSS+ blank back panel for monitor and keyboard, 619x50x1104mm

- * Art. no. 5999914 MSS+ Sonic perforated back panel, 259x50x552mm
- * Art. no. 5999915 MSS+ Sonic perforated back panel, 619x50x552mm
- * Art. no. 5999916 MSS+ Sonic perforated back panel, 719x50x552mm
- * Art. no. 5999917 MSS+ Sonic perforated back panel, 789x50x552mm
- * Art. no. 5999932 MSS+ Sonic perforated back panel, 959x50x552mm corner

- * Art. no. 5999918 MSS+ Sonic perforated back panel, 259x50x1104mm
- * Art. no. 5999919 MSS+ Sonic perforated back panel, 619x50x1104mm
- * Art. no. 5999920 MSS+ Sonic perforated back panel, 719x50x1104mm
- * Art. no. 5999921 MSS+ Sonic perforated back panel, 789x50x1104mm
- * Art. no. 5999935 MSS+ Sonic perforated back panel, 959x50x1104mm corner

- * Art. no. 5999922 MSS+ square perforated back panel, 259x50x552mm
- * Art. no. 5999923 MSS+ square perforated back panel, 619x50x552mm
- * Art. no. 5999924 MSS+ square perforated back panel, 719x50x552mm
- * Art. no. 5999925 MSS+ square perforated back panel, 789x50x552mm
- * Art. no. 5999933 MSS+ Sonic square perforated back panel, 959x50x552mm corner

- * Art. no. 5999926 MSS+ square perforated back panel, 259x50x1104mm
- * Art. no. 5999927 MSS+ square perforated back panel, 619x50x1104mm
- * Art. no. 5999928 MSS+ square perforated back panel, 719x50x1104mm
- * Art. no. 5999929 MSS+ square perforated back panel, 789x50x1104mm
- * Art. no. 5999936 MSS+ Sonic square perforated back panel, 959x50x1104mm corner

* Only on request

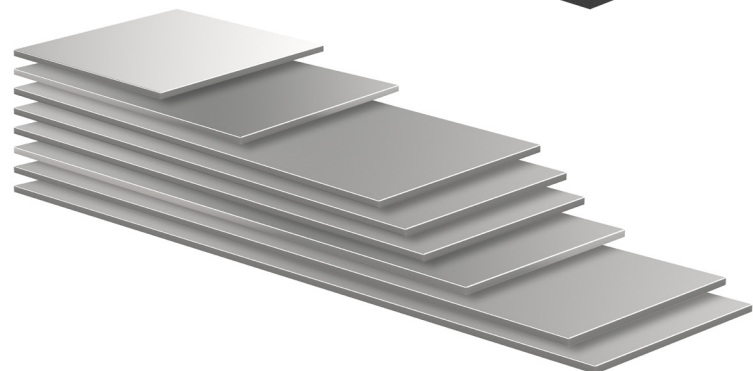
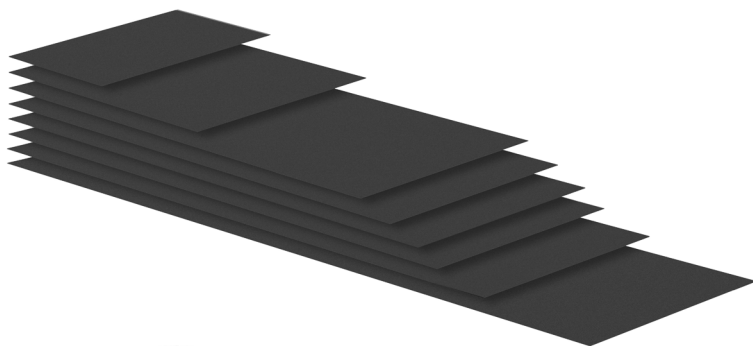
MSS+ has a wide variety of back panels to fit in the MSS+ system.

- High quality durable powder coating finish
- Standard color RAL 7016
- Heavy duty 1.4mm steel construction
- 10 year warranty

Optional:

Full range of colors and other perforated rear panels (square or round holes) available upon request, longer lead time and additional fees could apply.

Worktops



Range of composite worktops

- Art. no. 5999801 MSS+ composite worktop 360x650x2mm
- Art. no. 5999802 MSS+ composite worktop 720x650x2mm
- Art. no. 5999803 MSS+ composite worktop 890x650x2mm
- Art. no. 5999804 MSS+ composite worktop 1440x650x2mm (720+720mm)
- Art. no. 5999805 MSS+ composite worktop 1540x650x2mm
- Art. no. 5999806 MSS+ composite worktop 1610x650x2mm (720+890mm)
- Art. no. 5999807 MSS+ composite worktop 1780x650x2mm (890+890mm)
- Art. no. 5999808 MSS+ composite worktop 2160x650x2mm (720+720+720mm)

Thickness 2mm, depth 650mm

Range of composite worktops for portable cabinet

- Art. no. 5999021 MSS+ composite worktop, portable cabinet 863x655x2mm
- Art. no. 5999043 MSS+ composite worktop, portable cabinet 686x523x2mm
- Art. no. 5999044 MSS+ composite worktop, portable cabinet 856x523x2mm
- Art. no. 5999045 MSS+ composite worktop, portable cabinet 693x655x2mm

Range of stainless steel worktops

- Art. no. 5999701 MSS+ stainless steel worktop 360x650x20mm
- Art. no. 5999702 MSS+ stainless steel worktop 720x650x20mm
- Art. no. 5999703 MSS+ stainless steel worktop 890x650x20mm
- Art. no. 5999704 MSS+ stainless steel worktop 1441x650x20mm (720+720mm)
- Art. no. 5999705 MSS+ stainless steel worktop 1540x650x20mm
- Art. no. 5999706 MSS+ stainless steel worktop 1611x650x20mm (720+890mm)
- Art. no. 5999707 MSS+ stainless steel worktop 1781x650x20mm (890+890mm)
- Art. no. 5999708 MSS+ stainless steel worktop 2162x650x20mm (720+720+720mm)
- Art. no. 5999711 MSS+ stainless steel worktop 2261x650x20mm (720+1540mm)
- * Art. no. 5999712 MSS+ stainless steel worktop 2332x650x20mm (720+720+890mm)
- * Art. no. 5999709 MSS+ stainless steel worktop 2431x650x20mm (890+1540mm)

Thickness 20mm, depth 650mm

Range of stainless steel worktops for portable cabinet

- Art. no. 5999601 MSS+ stainless steel worktop, portable cabinet 700x530x20mm
- Art. no. 5999602 MSS+ stainless steel worktop, portable cabinet 700x600x20mm
- Art. no. 5999603 MSS+ stainless steel worktop, portable cabinet 870x530x20mm
- Art. no. 5999604 MSS+ stainless steel worktop, portable cabinet 870x660x20mm

Thickness 20mm

Range of corner worktops

- Art. no. 5999809 MSS+ composite worktop 1060x1060x2mm
- Art. no. 5999710 MSS+ stainless steel worktop 1060x1060x20mm

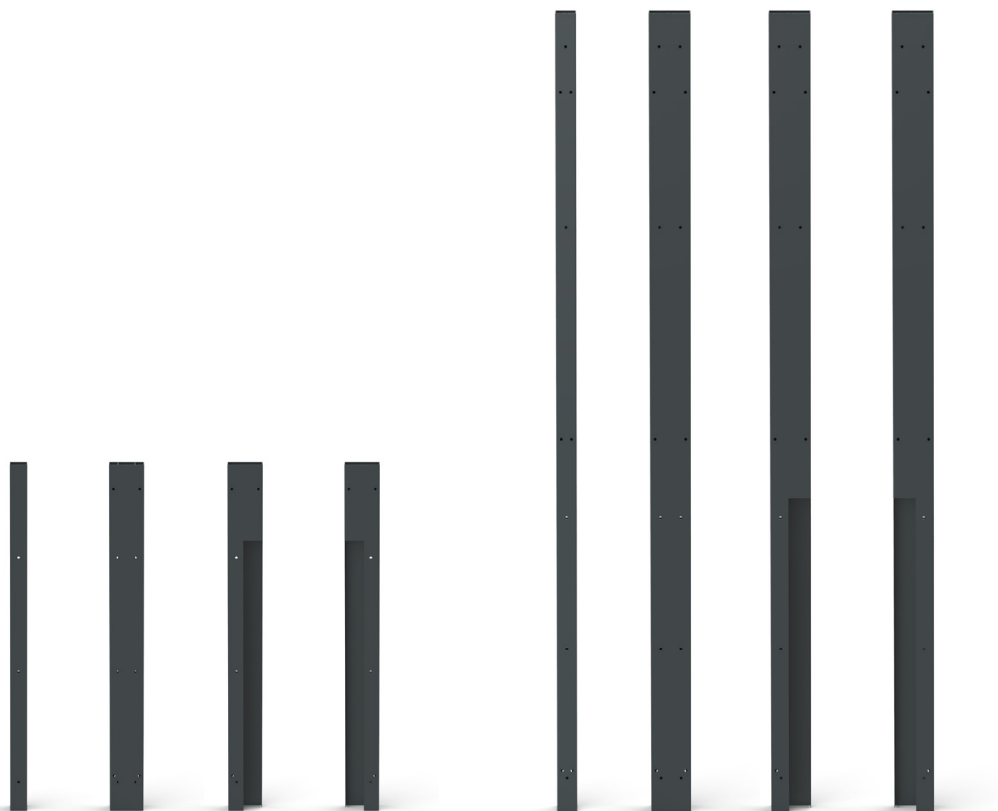
Range wooden worktop

- Art. no. 5999501 MSS+ wooden worktop 1780x650x40mm

Thickness 40mm, depth 650mm

* Only on request

Posts



RAL 7016



Range of posts

- Art. no. 5999401 MSS+ post 50x50x1020mm
- Art. no. 5999402 MSS+ post 100x50x1020mm
- Art. no. 5999403 MSS+ post 100x50x1016mm for portable cabinet, right
- Art. No. 5999404 MSS+ post 100x50x1016mm for portable cabinet, left
- Art. no. 5999405 MSS+ post 50x50x1997mm
- Art. no. 5999406 MSS+ post 100x50x1997mm
- Art. no. 5999407 MSS+ post 100x50x1993mm for portable cabinet, right
- Art. no. 5999408 MSS+ post 100x50x1993mm for portable cabinet, left

- High quality durable powder coating finish
- Cap on the end of the posts
- Standard color RAL 7016
- Heavy duty 1.4mm steel construction
- 10 year warranty

Optional:

Full range of colors upon request, longer lead time and additional fees could apply



Worktop bridge unit ensures connectivity in the gap between the cabinets, which allows extra working space or a possibility to place a portable drawer cabinet.

Range of bridge units

700MM



SONIC

720MM



SONIC

890MM



SONIC

1060MM



SONIC

Art. no. 5070001

MSS+ 700mm bridge unit

Bridge dimensions: 700mm wide, 650mm deep, 100mm high (to make a workbench).

Load capacity 400kg

Net weight 10kg

- High quality durable powder coating finish
- 10 year warranty

Art. no. 5072006

MSS+ 720mm bridge unit

Bridge dimensions: 720mm wide, 650mm deep, 100mm high.

Load capacity 400kg

Net weight 10,5kg

- High quality durable powder coating finish
- 10 year warranty

Art. no. 5089006

MSS+ 890mm bridge unit

Bridge dimensions: 890mm wide, 650mm deep, 100mm high.

Load capacity 400kg

Net weight 10,8kg

- High quality durable powder coating finish
- 10 year warranty

Art. no. 5106001

MSS+ 1060mm bridge unit

Bridge dimensions: 1060mm wide, 650mm deep, 100mm high. (to make a workbench).

Load capacity 400kg

Net weight 13,9kg

- High quality durable powder coating finish
- 10 year warranty

Optional for all bridge units:

- Hard-wearing composite worktop 2mm
- Stainless steel worktop 20mm
- Full range of colors upon request, longer lead time and additional fees could apply

Accessories



LED lighting
Page 127



Dividers
Page 128



Document holder
Page 130



Laptop/tablet holder
Page 131

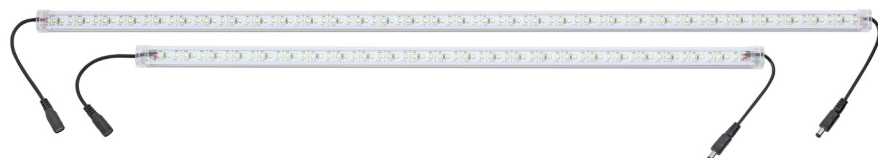


Power bar bracket
Page 132



Power bar
Page 132

Lighting



Focus on your productivity.

- Art. no. 5999201 MSS+ LED light, length 600mm
- Art. no. 5999202 MSS+ LED light, length 800mm
- Art. no. 5999203 MSS+ adaptor for LED light, USA plug
- Art. no. 5999204 MSS+ adaptor for LED light, EU plug
- Art. no. 5999205 MSS+ connector with switch for LED light
- Art. no. 5999206 MSS+ LED light 600mml (EU) w/adaptor+connector
- Art. no. 5999207 MSS+ LED light 600mml (USA) w/adaptor+connector
- Art. no. 5999208 MSS+ LED light 800mml (EU) w/adaptor+connector
- Art. no. 5999209 MSS+ LED light 800mml (USA) w/adaptor+connector

Features

- Find what you are looking for faster, without relying on surrounding lighting
- The latest technology is used
- Mountable under the wall cabinet
- Increase your productivity with a perfectly lit work surface
- Energy efficient and extremely long lasting
- Maximum connection, circuit of 4 LED lights

LED light length: 600mm

- 800-1000 Lm
- Color temperature: 6000-6500k
- White light
- Aluminium base + pc cover
- Mounting magnet included

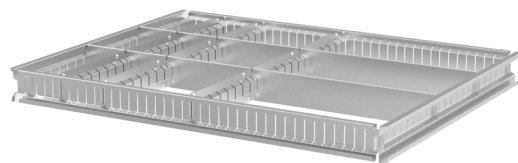
Led light length: 800mm

- 800-1000 Lm
- Color temperature: 6000-6500k
- White light
- Aluminium base + pc cover
- Mounting magnet included

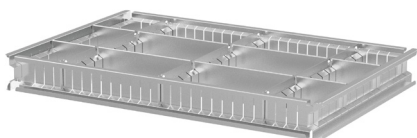
Dividers



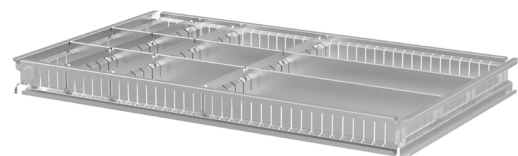
DIVIDER KIT 720MM



DIVIDER KIT 890MM



DIVIDER KIT 700MM



DIVIDER KIT 870MM



Get organized, be efficient, use the ultimate MSS+ dividers for a drawer.

Features

- Organize tools and parts of all sizes efficiently
- A modular solution, adaptable to your evolving storage needs
- Ultimate durability, superior to any other storage method

▪ Art. no. 5999305 MSS+ divider kit for 720mm cabinet contains:

- 3 pcs MSS+ divider slot vertical (5999312)
- 2 pcs MSS+ divider slot vertical for the side (5999313)
- 2 pcs MSS+ divider slot horizontal (5999310)
- 4 pcs MSS+ divider spacer horizontal 88.60mm (5999307)
- 4 pcs MSS+ divider spacer horizontal 182.30mm (5999308)

▪ Art. no. 5999306 MSS+ divider kit for 890mm cabinet contains:

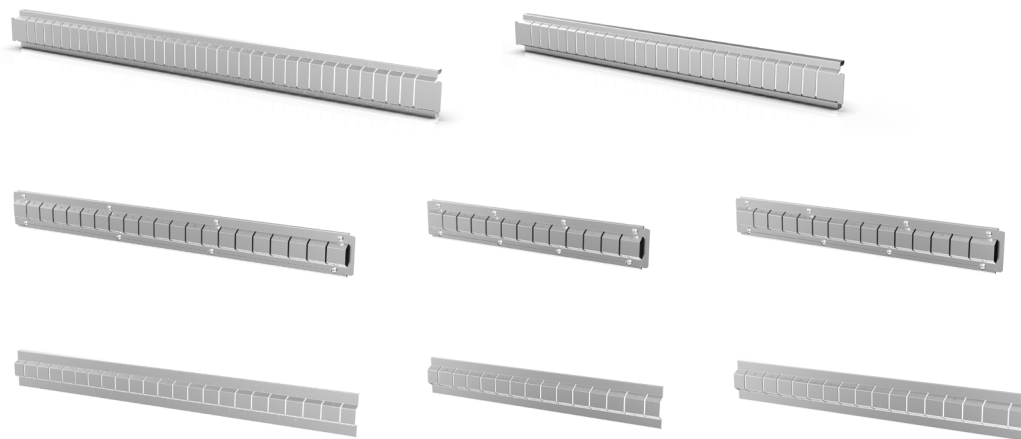
- 3 pcs MSS+ divider slot vertical (5999312)
- 2 pcs MSS+ divider slot vertical for the side (5999313)
- 2 pcs MSS+ divider slot horizontal (5999311)
- 4 pcs MSS+ divider spacer horizontal 88.60mm (5999307)
- 4 pcs MSS+ divider spacer horizontal 182.30mm (5999308)

▪ Art. no. 5999318 MSS+ divider kit for 700mm portable cabinet contains:

- 3 pcs MSS+ divider slot vertical (5999314)
- 2 pcs MSS+ divider slot vertical for the side (5999315)
- 2 pcs MSS+ divider slot horizontal (5999310)
- 4 pcs MSS+ divider spacer horizontal 88.60mm (5999307)
- 4 pcs MSS+ divider spacer horizontal 182.30mm (5999308)

▪ Art. no. 5999319 MSS+ divider kit for 870mm portable cabinet contains:

- 3 pcs MSS+ divider slot vertical (5999316)
- 2 pcs MSS+ divider slot vertical for the side (5999317)
- 2 pcs MSS+ divider slot horizontal (5999311)
- 4 pcs MSS+ divider spacer horizontal 88.60mm (5999307)
- 4 pcs MSS+ divider spacer horizontal 182.30mm (5999308)
- 2 pcs MSS+ divider spacer horizontal 369.76mm (5999309)



DIVIDER SLOTS



DIVIDER SPACERS

- Art. no. 5999310 MSS+ divider slot horizontal set of 2 pcs for 720mm cabinet
- Art. no. 5999311 MSS+ divider slot horizontal set of 2 pcs for 890mm cabinet

- Art. no. 5999312 MSS+ divider slot vertical set of 2 pcs for 720mm or 890mm cabinet
- Art. no. 5999313 MSS+ divider slot vertical set of 2 pcs for the side of 720mm or 890mm cabinet drawer

- Art. no. 5999314 MSS+ divider slot vertical set of 2 pcs for 700 portable cabinet 5072005
- Art. no. 5999315 MSS+ divider slot vertical set of 2 pcs for the side of 700 portable cabinet 5072005

- Art. no. 5999316 MSS+ divider slot vertical set of 2 pcs for 870 portable cabinet 5089005
- Art. no. 5999317 MSS+ divider slot vertical set of 2 pcs for the side of 870 portable cabinet 5089005

- Art. no. 5999307 MSS+ divider spacer horizontal set of 10pcs 88.60mm
- Art. no. 5999308 MSS+ divider spacer horizontal set of 10pcs 182.30mm
- Art. no. 5999309 MSS+ divider spacer horizontal set of 10pcs 369.76mm

Document holder



Art. no. 5999061

Dimensions: 560mm wide, 40mm deep, 314mm high

- Convenient holder for tablet/laptop or documents
- Safety protection on all edges
- Heavy duty 1.0mm steel construction

Laptop/tablet holder



Art. no. 5999304

Dimensions: 447mm wide, 158mm deep, 365mm high

- Convenient shelf for tablet/laptop
- Multifunctional
- Tilt function
- Mountable on back panels
- Heavy duty 1.2mm steel construction

Optional:

- Full range of colors upon request, longer lead time and additional fees could apply

Power bar



Art. no. 5999302 power bar (EU power bar)

Art. no. 5999303 power bar (USA power bar)

The MSS+ high performance power bars features a tough, anodized aluminium extrusion ensuring strength and durability.

Features

- Durable abs and aluminum housing
- 4 grounded outlets
- 2 USB outlets
- Lighted reset/off switch
- 5 m cord
- Ergonomically designed, profiled body - robust and easy to grip
- Rugged anodised aluminium extrusion - lightweight and strong
- Pa6 nylon moulded outlets and endcaps - protects and insulates power supply
- High grade polychloropreen/neoprene rubber cable (oil, chemical and ozon resistant)
- Color RAL 7016

Remark

Cabinets with fixed drawers include power bar in bottom drawer.

Art. no. 5999301 power bar bracket

- Angled power bar bracket can be mounted on the back panel
- Angle to the bracket provides clearance for cable leads and plugs bar
- The power bar bracket sits inside the backface of the post, this allows a back-to-back low level solution

Compositions



Art. no. 577006 composite worktop
Art. no. 5771106 stainless steel worktop



Art. no. 5770004 composite worktop
Art. no. 5771104 stainless steel worktop

Art. no.	Pcs	Description
5036003	1	MSS+ 360mm reel cabinet
5072009	1	MSS+ 720mm storage cabinet, left-handed door
5072012	1	MSS+ 720mm waste bin/recycle cabinet
5089005	1	MSS+ 870mm portable cabinet, 7 drawers
5999301	2	MSS+ power bar bracket
5089006	1	MSS+ 890mm bridge unit
5999302	2	MSS+ power bar (EU version)
5999401	2	MSS+ post 50x50x1020mm
5999402	1	MSS+ post 100x50x1020mm
5999403	1	MSS+ post 100x50x1016mm for portable cabinet, right
5999404	1	MSS+ post 100x50x1016mm for portable cabinet, left
5999801	1	MSS+ composite worktop 360x650x2mm
5999802	1	MSS+ composite worktop 720x650x2mm
5999806	1	MSS+ composite worktop 1610x650x2mm
5999701	1	MSS+ stainless steel worktop 360x650x20mm
5999702	1	MSS+ stainless steel worktop 720x650x20mm
5999706	1	MSS+ stainless steel worktop 1610x650x20mm
5999901	1	MSS+ blank back panel, 259x120mm
5999902	2	MSS+ blank back panel, 619x120mm
5999904	1	MSS+ blank back panel, 789x120mm

Art. no.	Pcs	Description
5072012	1	MSS+ 720mm waste bin/recycle cabinet
5089005	1	MSS+ 870mm portable cabinet, 7 drawers
5089006	1	MSS+ 890mm bridge unit
5153901	1	MSS+ 1539mm drawer cabinet, 12 drawers
5999301	2	MSS+ power bar bracket
5999302	2	MSS+ power bar (EU version)
5999401	2	MSS+ post 50x50x1020mm
5999402	1	MSS+ post 100x50x1020mm
5999403	1	MSS+ post 100x50x1016mm for portable cabinet, right
5999404	1	MSS+ post 100x50x1016mm for portable cabinet, left
5999805	1	MSS+ composite worktop 1539x650x2mm
5999806	1	MSS+ composite worktop 1620x650x2mm
5999705	1	MSS+ stainless steel worktop 1539x650x20mm
5999706	1	MSS+ stainless steel worktop 1620x650x20mm
5999902	2	MSS+ blank back panel, 619x120mm
5999903	1	MSS+ blank back panel, 718x120mm
5999904	1	MSS+ blank back panel, 789x120mm



Art. no. 5770002 composite worktop
Art. no. 5771102 stainless steel worktop



Art. no. 5770001 composite worktop
Art. no. 5771101 stainless steel worktop

Art. no.	Pcs	Description
5036003	1	MSS+ 360mm reel cabinet
5072001	1	MSS+ 720mm drawer cabinet, 8 drawers
5072009	1	MSS+ 720mm storage cabinet, left-handed door
5089005	1	MSS+ 870mm portable cabinet, 7 drawers
5089006	1	MSS+ 890mm bridge unit
5089007	1	MSS+ 890mm reel cabinet
5999301	2	MSS+ power bar bracket
5999302	2	MSS+ power bar (EU version)
5999401	2	MSS+ post 50x50x1020mm
5999402	2	MSS+ post 100x50x1020mm
5999403	1	MSS+ post 100x50x1016mm for portable cabinet, right
5999404	1	MSS+ post 100x50x1016mm for portable cabinet, left
5999801	1	MSS+ composite worktop 360x650x2mm
5999806	2	MSS+ composite worktop 1620x650x2mm
5999701	1	MSS+ stainless steel worktop 360x650x20mm
5999706	2	MSS+ stainless steel worktop 1620x650x20mm
5999901	1	MSS+ blank back panel, 259x120mm
5999902	2	MSS+ blank back panel, 619x120mm
5999904	2	MSS+ blank back panel, 789x120mm

Art. no.	Pcs	Description
5072001	1	MSS+ 720mm drawer cabinet, 8 drawers
5072007	1	MSS+ 720mm reel cabinet
5072010	1	MSS+ 720mm storage cabinet, right-handed door
5072011	1	MSS+ 720mm storage cabinet with sink, double door
5072012	1	MSS+ 720mm waste bin/recycle cabinet
5999301	2	MSS+ power bar bracket
5999302	2	MSS+ power bar (EU version)
5999401	2	MSS+ post 50x50x1020mm
5999402	4	MSS+ post 100x50x1020mm
5999804	1	MSS+ composite worktop 1440x650x2mm
5999808	1	MSS+ composite worktop 2160x650x2mm
5999704	1	MSS+ stainless steel worktop 1440x650x20mm
5999708	1	MSS+ stainless steel worktop 2160x650x20mm
5999902	5	MSS+ blank back panel, 619x120mm



Art. no. 5770003 composite worktop
Art. no. 5771103 stainless steel worktop

Art. no.	Pcs	Description
5072009	1	MSS+ 720mm storage cabinet, left-handed door
5089005	1	MSS+ 870mm portable cabinet, 7 drawers
5089006	1	MSS+ 890mm bridge unit
5089009	1	MSS+ 890mm storage cabinet, double door
5153901	1	MSS+ 1539mm drawer cabinet, 12 drawers
5999301	2	MSS+ power bar bracket
5999302	2	MSS+ power bar (EU version)
5999401	2	MSS+ post 50x50x1020mm
5999402	2	MSS+ post 100x50x1020mm
5999403	1	MSS+ post 100x50x1016mm for portable cabinet, right
5999404	1	MSS+ post 100x50x1016mm for portable cabinet, left
5999802	1	MSS+ composite worktop 720x650x2mm
5999805	1	MSS+ composite worktop 1539x650x2mm
5999807	1	MSS+ composite worktop 1780x650x2mm
5999702	1	MSS+ stainless steel worktop 720x650x20mm
5999705	1	MSS+ stainless steel worktop 1539x650x20mm
5999707	1	MSS+ stainless steel worktop 1780x650x20mm
5999902	2	MSS+ blank back panel, 619x120mm
5999903	1	MSS+ blank back panel, 718x120mm
5999904	2	MSS+ blank back panel, 789x120mm



Art. no. 5881106 stainless steel worktop

Art. no.	Pcs	Description
5071802	2	MSS+ 720mm wall cabinet
5072001	1	MSS+ 720mm drawer cabinet, 8 drawers
5072009	1	MSS+ 720mm storage cabinet, left-handed door
5072012	1	MSS+ 720mm waste bin/recycle cabinet
5089004	1	MSS+ 870mm portable cabinet extra deep, 7 drawers
5089006	1	MSS+ 890mm bridge unit
5089010	1	MSS+ 890mm wall cabinet
5106002	1	MSS+ 1060mm corner cabinet, double door
5999401	1	MSS+ post 50x50x1020mm
5999402	1	MSS+ post 100x50x1020mm
5999405	2	MSS+ post 50x50x1997mm
5999406	1	MSS+ post 100x50x1997mm
5999407	1	MSS+ post 100x50x1993mm for portable cabinet, right
5999408	1	MSS+ post 100x50x1993mm for portable cabinet, left
5999702	2	MSS+ stainless steel worktop 720x650x20mm
5999706	1	MSS+ stainless steel worktop 1610x650x20mm
5999710	1	MSS+ stainless steel worktop 1060x1060x20mm corner
5999905	2	MSS+ blank back panel, 619x552mm
5999907	1	MSS+ blank back panel, 789x552mm
5999934	1	MSS+ blank back panel, 1060x1060mm corner



Art. no. 5770005 composite worktop
Art. no. 5771105 stainless steel worktop

Art. no.	Pcs	Description
5072001	1	MSS+ 720mm drawer cabinet, 8 drawers
5072002	1	MSS+ 720mm drawer cabinet, 6 drawers
5072003	1	MSS+ 720mm topbox, 5 drawers
5089001	1	MSS+ 890mm drawer cabinet, 8 drawers
5089002	1	MSS+ 890mm drawer cabinet, 6 drawers
5089003	1	MSS+ 890mm topbox, 5 drawers
5999301	2	MSS+ power bar bracket
5999302	2	MSS+ power bar (EU version)
5999401	2	MSS+ post 50x50x1020mm
5999402	1	MSS+ post 100x50x1020mm
5999806	1	MSS+ composite worktop 1620x650x2mm
5999706	1	MSS+ stainless steel worktop 1620x650x20mm
5999902	1	MSS+ blank back panel, 619x120mm
5999904	1	MSS+ blank back panel, 789x120mm



Art. no. 5771107 stainless steel worktop

Art. no.	Pcs	Description
5072005	1	MSS+ 700mm portable cabinet, 7 drawers
5072006	1	MSS+ 720mm bridge unit
5072009	1	MSS+ 720mm storage cabinet, left-handed door
5072012	1	MSS+ 720mm waste bin/recycle cabinet
5089001	1	MSS+ 890mm drawer cabinet, 8 drawers
5106002	1	MSS+ 1060mm corner cabinet, double door
5999301	2	MSS+ power bar bracket
5999302	2	MSS+ power bar
5999401	4	MSS+ post 50x50x1020mm
5999402	2	MSS+ post 100x50x1020mm
5999403	1	MSS+ post 100x50x1016mm for portable cabinet, right
5999404	1	MSS+ post 100x50x1016mm for portable cabinet, left
5999702	1	MSS+ stainless steel worktop 720x650x20mm
5999708	1	MSS+ stainless steel worktop 2160x650x20mm
5999710	1	MSS+ stainless steel worktop 1060x1060x20mm corner
5999902	4	MSS+ blank back panel, 619x120mm
5999930	2	MSS+ blank back panel, 1060x120mm corner



Art. no. 5880003 composite worktop
Art. no. 5881103 stainless steel worktop

Art. no.	Pcs	Description
5071802	1	MSS+ 720mm wall cabinet
5089005	1	MSS+ 870mm portable cabinet, 7 drawers
5089006	1	MSS+ 890mm bridge unit
5089009	1	MSS+ 890mm storage cabinet, double door
5089010	1	MSS+ 890mm wall cabinet
5153901	1	MSS+ 1539mm drawer cabinet, 12 drawers
5999405	2	MSS+ post 50x50x1997mm
5999406	1	MSS+ post 100x50x1997mm
5999407	1	MSS+ post 100x50x1993mm for portable cabinet, right
5999408	1	MSS+ post 100x50x1993mm for portable cabinet, left
5999805	1	MSS+ composite worktop 1539x650x2mm
5999807	1	MSS+ composite worktop 1780x650x2mm
5999705	1	MSS+ stainless steel worktop 1539x650x20mm
5999707	1	MSS+ stainless steel worktop 1780x650x20mm
5999905	1	MSS+ blank back panel, 619x552mm
5999907	1	MSS+ blank back panel, 789x552mm
5999910	1	MSS+ blank back panel, 719x1104mm
5999911	1	MSS+ blank back panel, 789x1104mm



Art. no. 5880001 composite worktop
Art. no. 5881101 stainless steel worktop

Art. no.	Pcs	Description
5036003	1	MSS+ 360mm reel cabinet
5065501	1	MSS+ 650mm tall cabinet, left-handed door
5071802	1	MSS+ 720mm wall cabinet
5072001	1	MSS+ 720mm drawer cabinet, 8 drawers
5072007	1	MSS+ 720mm reel cabinet
5072012	1	MSS+ 720mm waste bin/recycle cabinet
5089001	1	MSS+ 890mm drawer cabinet, 8 drawers
5089010	1	MSS+ 890mm wall cabinet
5999405	2	MSS+ post 50x50x1997mm
5999406	5	MSS+ post 100x50x1997mm
5999801	1	MSS+ composite worktop 360x650x2mm
5999804	1	MSS+ composite worktop 1440x650x2mm
5999806	1	MSS+ composite worktop 1620x650x2mm
5999701	1	MSS+ stainless steel worktop 360x650x20mm
5999704	1	MSS+ stainless steel worktop 1440x650x20mm
5999706	1	MSS+ stainless steel worktop 1620x650x20mm
5999905	1	MSS+ blank back panel, 619x552mm
5999907	1	MSS+ blank back panel, 789x552mm
5999908	1	MSS+ blank back panel, 259x1104mm
5999909	2	MSS+ blank back panel, 619x1104mm



Art. no. 5880002 composite worktop
Art. no. 5881102 stainless steel worktop

Art. no.	Pcs	Description
5065501	1	MSS+ 650mm tall cabinet, left-handed door
5065502	1	MSS+ 650mm tall cabinet, right-handed door
5071802	1	MSS+ 720mm wall cabinet
5072012	1	MSS+ 720mm waste bin/recycle cabinet
5089005	1	MSS+ 870mm portable cabinet, 7 drawers
5089006	1	MSS+ 890mm bridge unit
5089010	1	MSS+ 890mm wall cabinet
5153901	1	MSS+ 1539mm drawer cabinet, 12 drawers
5999405	2	MSS+ post 50x50x1997mm
5999406	3	MSS+ post 100x50x1997mm
5999407	1	MSS+ post 100x50x1993mm for portable cabinet, right
5999408	1	MSS+ post 100x50x1993mm for portable cabinet, left
5999805	1	MSS+ composite worktop 1539x650x2mm
5999806	1	MSS+ composite worktop 1620x650x2mm
5999705	1	MSS+ stainless steel worktop 1539x650x20mm
5999706	1	MSS+ stainless steel worktop 1620x650x20mm
5999905	1	MSS+ blank back panel, 619x552mm
5999907	1	MSS+ blank back panel, 789x552mm
5999909	1	MSS+ blank back panel, 619x1104mm
5999910	1	MSS+ blank back panel, 719x1104mm



Art. no. 5880004 composite worktop
Art. no. 5881104 stainless steel worktop

Art. no.	Pcs	Description
5036003	1	MSS+ 360mm reel cabinet
5065501	1	MSS+ 650mm tall cabinet, left-handed door
5072001	1	MSS+ 720mm drawer cabinet, 8 drawers
5072008	1	MSS+ 720mm wall cabinet with tambour door
5072010	1	MSS+ 720mm storage cabinet, right-handed door
5072012	1	MSS+ 720mm waste bin/recycle cabinet
5089001	1	MSS+ 890mm drawer cabinet, 8 drawers
5089008	1	MSS+ 890mm wall cabinet with tambour door
5999405	2	MSS+ post 50x50x1997mm
5999406	5	MSS+ post 100x50x1997mm
5999801	1	MSS+ composite worktop 360x650x2mm
5999802	2	MSS+ composite worktop 720x650x2mm
5999806	1	MSS+ composite worktop 1620x650x2mm
5999701	1	MSS+ stainless steel worktop 360x650x20mm
5999702	2	MSS+ stainless steel worktop 720x650x20mm
5999706	1	MSS+ stainless steel worktop 1620x650x20mm
5999902	1	MSS+ blank back panel, 619x120mm
5999904	1	MSS+ blank back panel, 789x120mm
5999908	1	MSS+ blank back panel, 259x1104mm
5999909	2	MSS+ blank back panel, 619x1104mm



Art. no. 5880005 composite worktop
Art. no. 5881105 stainless steel worktop



Art. no. 5660001 wooden worktop

Art. no.	Pcs	Description
5071802	3	MSS+ 720mm wall cabinet
5072013	2	MSS+ 720mm lift & power cabinet Challenger
5082001	1	MSS+ 820mm wall cabinet
5089005	2	MSS+ 870mm portable cabinet, 7 drawers
5089006	2	MSS+ 890mm bridge unit
5089010	2	MSS+ 890mm wall cabinet
5153901	1	MSS+ 1539mm drawer cabinet, 12 drawers
5999405	2	MSS+ post 50x50x1997mm
5999406	1	MSS+ post 100x50x1997mm
5999407	2	MSS+ post 100x50x1993mm for portable cabinet, right
5999408	2	MSS+ post 100x50x1993mm for portable cabinet, left
5999805	1	MSS+ composite worktop 1539x650x2mm
5999806	2	MSS+ composite worktop 1620x650x2mm
5999705	1	MSS+ stainless steel worktop 1539x650x20mm
5999706	2	MSS+ stainless steel worktop 1620x650x20mm
5999905	3	MSS+ blank back panel, 619x552mm
5999906	1	MSS+ blank back panel, 719x552mm
5999907	2	MSS+ blank back panel, 789x552mm

Art. no.	Pcs	Description
5036003	1	MSS+ 360mm reel cabinet
5070001	1	MSS+ 700mm bridge unit
5072001	1	MSS+ 720mm drawer cabinet, 8 drawers
5999501	1	MSS+ wooden worktop 1780x650x40mm



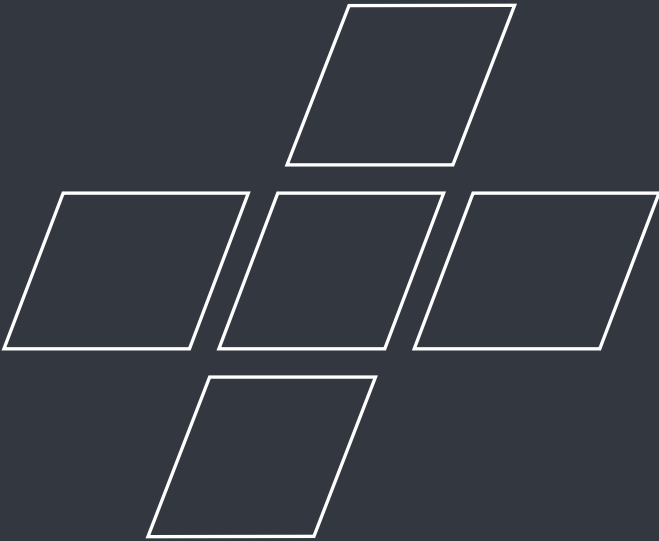
Premium workplaces,
Ultimate workflow.



**WE ARE
READY.**

///MSS+

———— MSS+ is a brand of **sonic**





SONIC EQUIPMENT BV

Component 114 - 116

1446 WP Purmerend

The Netherlands

Tel. +31 299 437 000

Fax +31 299 436 610

info@sonicmssplus.com

www.sonicmssplus.com

